



# **PARTS CATALOGUE**

**AL115FX** (1KP2) INDONESIA

**AL115FX** (1KPB) INDONESIA

AL115FX  
PARTS CATALOGUE  
©2012 by Yamaha Motor Co., Ltd.  
1st edition, December 2012  
All rights reserved.  
Any reprinting or unauthorized use  
without the written permission of  
Yamaha Motor Co., Ltd.  
is expressly prohibited.  
Printed in Japan.

## FOREWORD

This Parts Catalogue is related to the parts for the model(s) on the cover page. When you are ordering replacement parts, please refer to this Parts Catalogue and quote both part numbers and part names correctly.

1. Modifications or additions which have been made after the issue of the Parts Catalogue will be announced in the Parts News.  
It is advisable that you make the necessary corrections to the Parts Catalogue according to the Parts News.

2. Abbreviations

The following abbreviations are used in this Parts Catalogue.

“UR” Use specified parts number.

“UN” Use as many as needed.

“AP” Alternate Parts

“LM” Locally Made (Parts need to be ordered locally)

“F#” Frame No. (Applicable machine No.)

“O/S” Over Size

3. The number of components for assembly

- Parts, which are to be supplied in an assembly, are listed with a dot (.) in front of the part name as shown below.
- The numeral appearing to the right of each component part indicates the quantity of parts for each assembly unit.

PART NO.	DESCRIPTION	Q'TY	REMARKS
2F5-83310-60	FRONT FLASHER LIGHT ASSY	2	
115-83311-60	.BULB (6V-18W)	1	

4. Applicable colours of graphics are represented in the “REMARKS” as shown below.

PART NO.	DESCRIPTION	Q'TY	REMARKS
2N4-24110-00-X5	FUEL TANK COMP.	2	MXR
3J1-24240-10	.GRAPHIC, FUEL TANK	1	FOR MXR

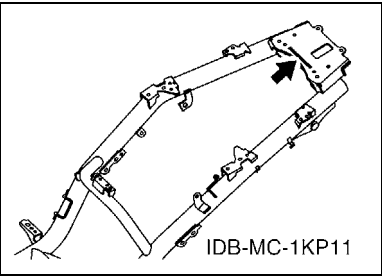
5. Note that the illustrations for reference in finding parts numbers are not to be used for assembling. When assembling, please use the applicable service manual.

6. The asterisk (\*) before a reference number indicates modified items after the first edition.

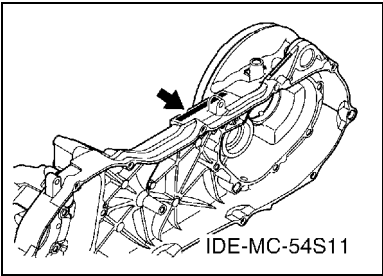
FOREWORD

7. Applicable Serial No.

Frame Serial No.



Engine Serial No.



8. Applicable Colour Code (The (\*) mark shows Model colour.)

Abbreviation	Colour Name	Colour Code
DPRMD(*)	DEEP PURPLISH RED METALLIC D	1294
RM7(*)	RED METALLIC 7	1218
RYC1	REDDISH YELLOW COCKTAIL 1	0251
SMX(*)	BLACK METALLIC X	0903
VPBC5(*)	VIVID PURPLISH BLUE COCKTAIL 5	1177
WM6(*)	WHITE METALLIC 6	1124

9. Applicable Starting Serial No.

Frame Serial No.

Serial No.	Name Of Q'ty Column	Model Code

Engine Serial No.

Serial No.	Name Of Q'ty Column	Model Code

# CONTENTS

## ENGINE

CYLINDER .....	1
CRANKSHAFT & PISTON .....	2
VALVE .....	3
CAMSHAFT & CHAIN .....	4
OIL PUMP .....	5
AIR SHROUD & FAN .....	6
INTAKE .....	7
EXHAUST .....	9
CRANKCASE .....	10
CRANKCASE COVER 1 .....	12
STARTER .....	13
CLUTCH .....	14
TRANSMISSION .....	16

## CHASSIS

FRAME .....	17
FENDER .....	18
SIDE COVER .....	19
REAR ARM & SUSPENSION .....	23
STEERING .....	24
FUEL TANK .....	26
SEAT .....	27
FRONT WHEEL .....	29
FRONT BRAKE CALIPER .....	30
REAR WHEEL .....	31
STEERING HANDLE & CABLE .....	32
FRONT MASTER CYLINDER .....	34
STAND & FOOTREST .....	35
LEG SHIELD .....	37
GENERATOR .....	40
STARTING MOTOR .....	41
METER .....	42
HEADLIGHT .....	43
TAILLIGHT .....	44
HANDLE SWITCH & LEVER .....	45
ELECTRICAL 1 .....	46
ELECTRICAL 2 .....	47

## INDEX

NUMERICAL INDEX .....	48
-----------------------	----

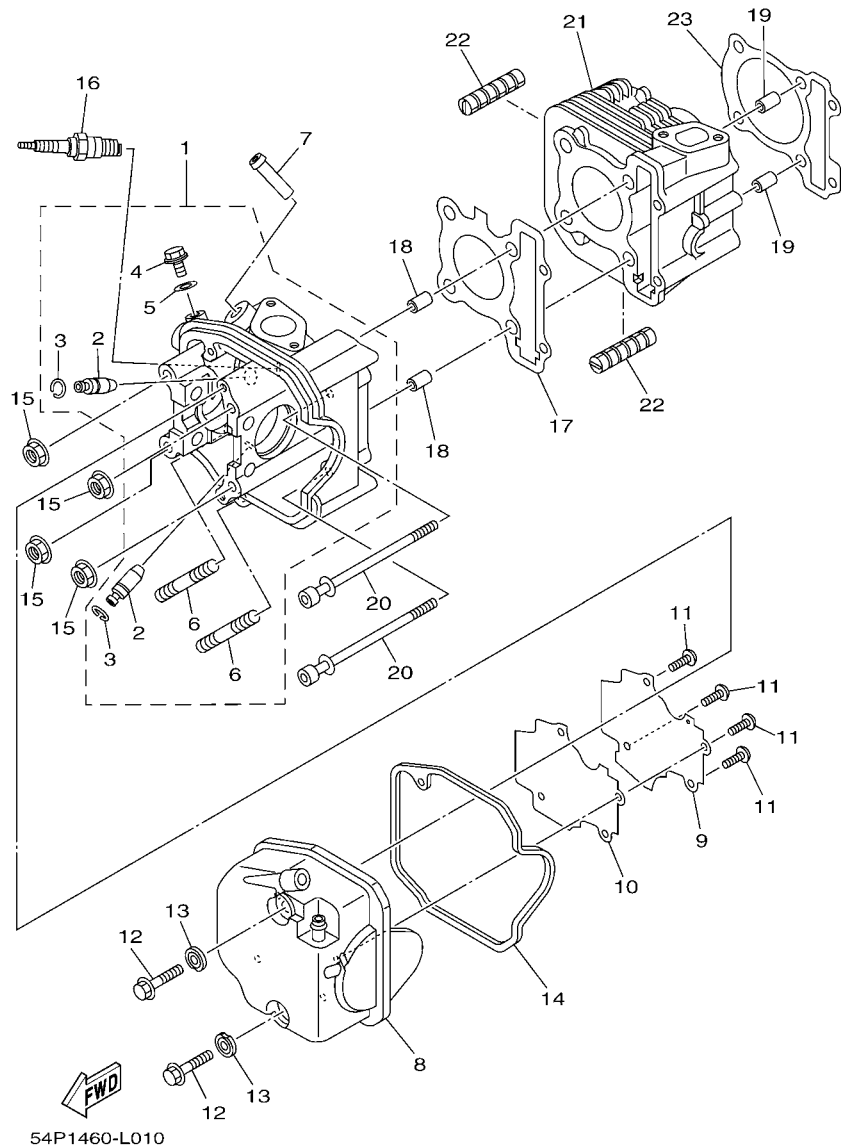


FIG. 1 CYLINDER

REF. NO.	PART NO.	DESCRIPTION	1KP2	1KPB		REMARKS
1	54P-E1102-00	CYLINDER HEAD ASSY	1	1		
2	54P-E1133-10	.GUIDE, VALVE 1	2	2		
3	93440-10085	.CIRCLIP	2	2		
4	95022-06010	.BOLT, FLANGE	1	1		
5	90430-06014	.GASKET	1	1		
6	95612-08618	.BOLT, STUD	2	2		
7	54P-E111J-00	PIPE 1	1	1		
8	54P-E1191-00	COVER, CYLINDER HEAD 1	1	1		
9	54P-E1165-00	PLATE, BREATHER	1	1		
10	54P-E1169-00	GASKET, BREATHER COVER	1	1		
11	90149-05801	SCREW	4	4		
12	95812-06030	BOLT, FLANGE	2	2		
13	54P-E1173-00	WASHER, SEALING	2	2		
14	54P-E1193-00	GASKET, HEAD COVER 1	1	1		
15	90179-08518	NUT	4	4		
16	94700-00880	PLUG, SPARK (NGK CR6HSA)	1	1		UR
	94700-00895	PLUG, SPARK (ND U20FSR-U)	1			UR
17	54P-E1181-00	GASKET, CYLINDER HEAD 1	1	1		
18	91810-14809	PIN, DOWEL	2	2		
19	91810-14809	PIN, DOWEL	2	2		
20	90110-06862	BOLT, HEXAGON SOCKET HEAD	2	2		
21	54P-E1311-00	CYLINDER 1	1			
	54P-E1311-10	CYLINDER 1		1		
22	54P-E1162-00	ABSORBER 2	2	2		
23	54P-E1351-00	GASKET, CYLINDER	1	1		













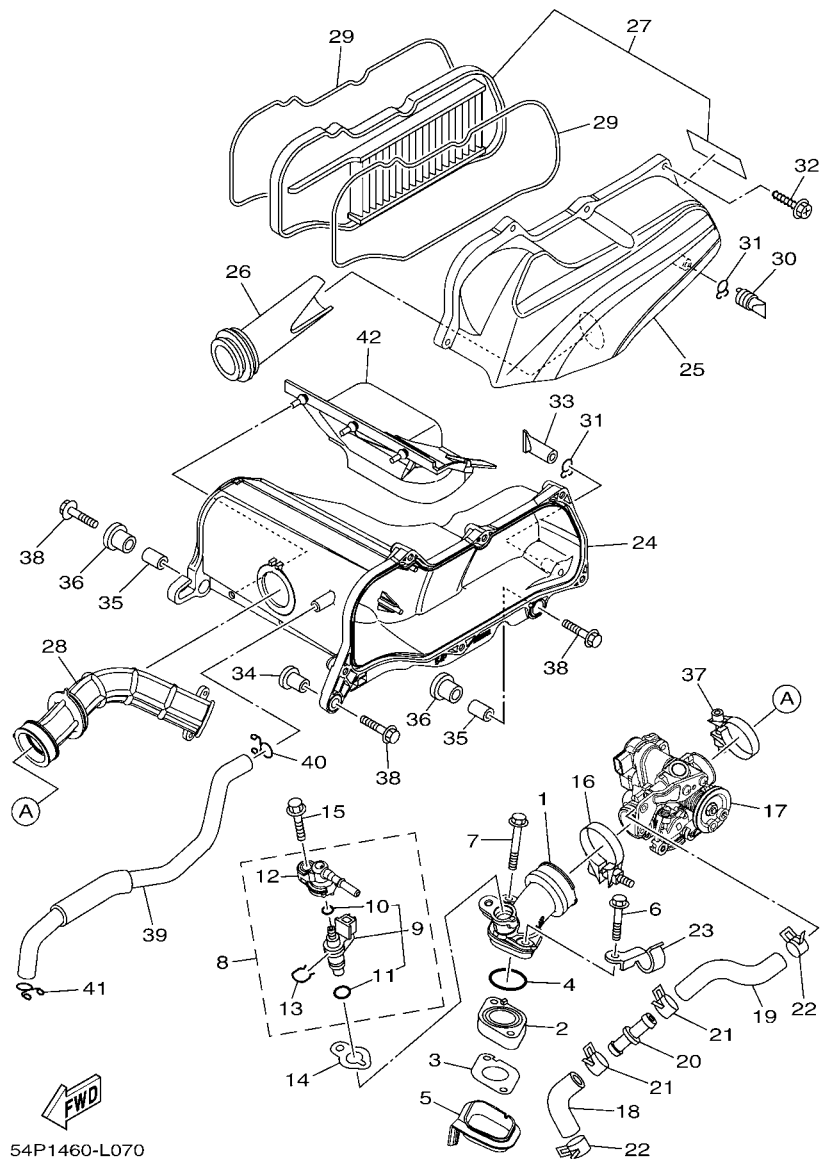


FIG. 7 INTAKE

REF. NO.	PART NO.	DESCRIPTION	1KP2	1KPB			REMARKS
1	54P-E3585-00	MANIFOLD	1	1			
2	54P-E3595-00	JOINT	1	1			
3	54P-E3556-00	GASKET, MANIFOLD	1	1			
4	93210-30611	O-RING	1	1			
5	54P-E3593-00	DAMPER	1	1			
6	90105-068A5	BOLT, FLANGE	1	1			
7	90105-068A6	BOLT, FLANGE	1	1			
8	54P-E3770-00	INJECTOR ASSY	1	1			
9	54P-E3761-00	.INJECTOR	1	1			
10	54P-E4147-00	..O-RING	1	1			
11	5CA-E4147-00	..O-RING	1	1			
12	54P-E3938-00	.PIPE	1	1			
13	54P-E4137-00	.CLIP	1	1			
14	54P-E3557-00	GASKET	1	1			
15	95812-06025	BOLT, FLANGE	1	1			
16	54P-E3474-00	BAND	1	1			
17	54P-E3750-01	THROTTLE BODY ASSY	1	1			
18	54P-E3892-00	HOSE, AIR 2	1	1			
19	54P-E3895-00	HOSE, AIR	1	1			
20	54P-E3815-00	JOINT 1	1	1			
21	90467-15804	CLIP	2	2			
22	90467-15804	CLIP	2	2			
23	54P-E4146-00	PLATE	1	1			
24	54P-E4411-00	CASE, AIR CLEANER 1	1	1			
25	54P-E4412-00	CAP, CLEANER CASE 1	1	1			
26	54P-E4437-00	DUCT	1	1			
27	54P-WE445-00	AIR CLEANER ELEMENT ASSY	1	1			

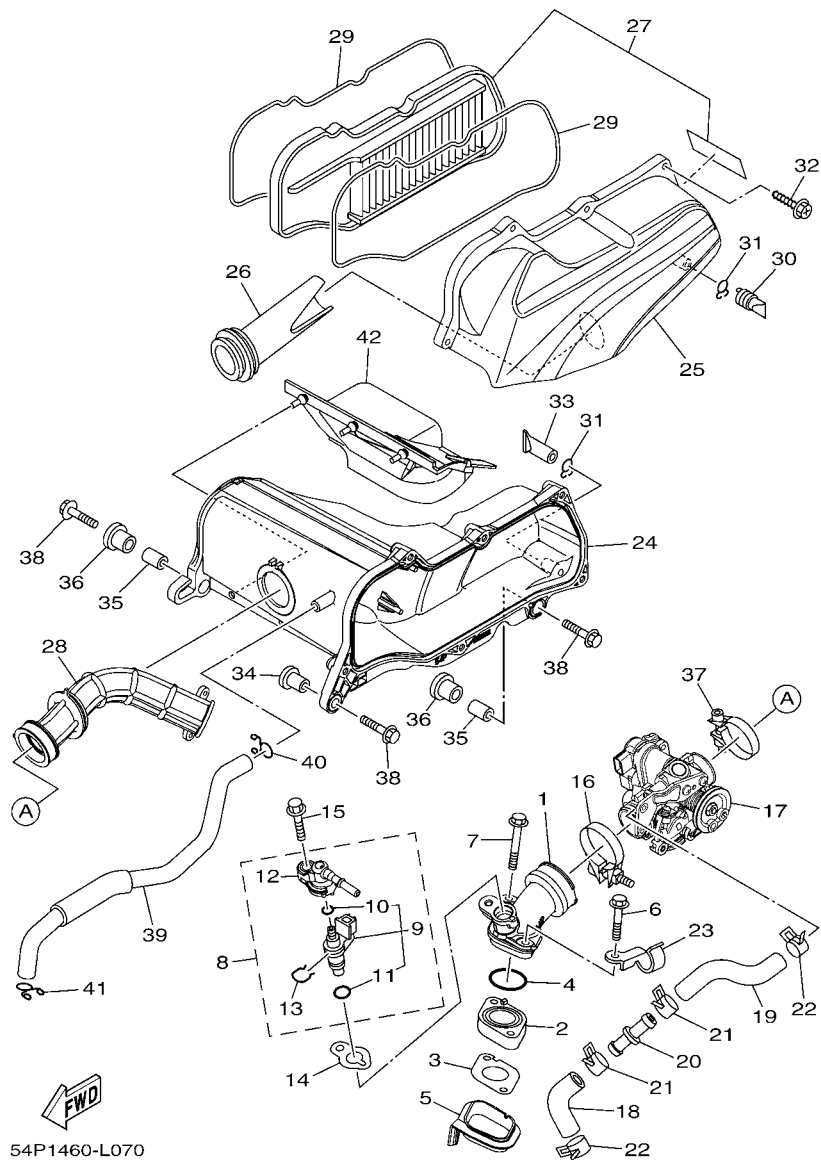


FIG. 7 INTAKE

REF. NO.	PART NO.	DESCRIPTION	1KP2	1KPB		REMARKS
28	54P-E4453-00	JOINT, AIR CLEANER 1	1	1		
29	54P-E4452-00	SEAL	2	2		
30	5TP-E443G-00	PIPE, DRAIN 2	1	1		
31	90467-12807	CLIP	2	2		
32	90163-05803	SCREW, TAPPING	6	6		
33	28D-E443E-00	PIPE, DRAIN	1	1		
34	90387-06891	COLLAR	1	1		
35	90387-064W3	COLLAR	2	2		
36	90480-13013	GROMMET	2	2		
37	54P-E3575-00	BAND	1	1		
38	95812-06025	BOLT, FLANGE	3	3		
39	54P-E1166-00	PIPE, BREATHER 1	1	1		
40	90467-13858	CLIP	1	1		
41	90467-13858	CLIP	1	1		
42	54P-E442F-00	PROTECTOR	1	1		



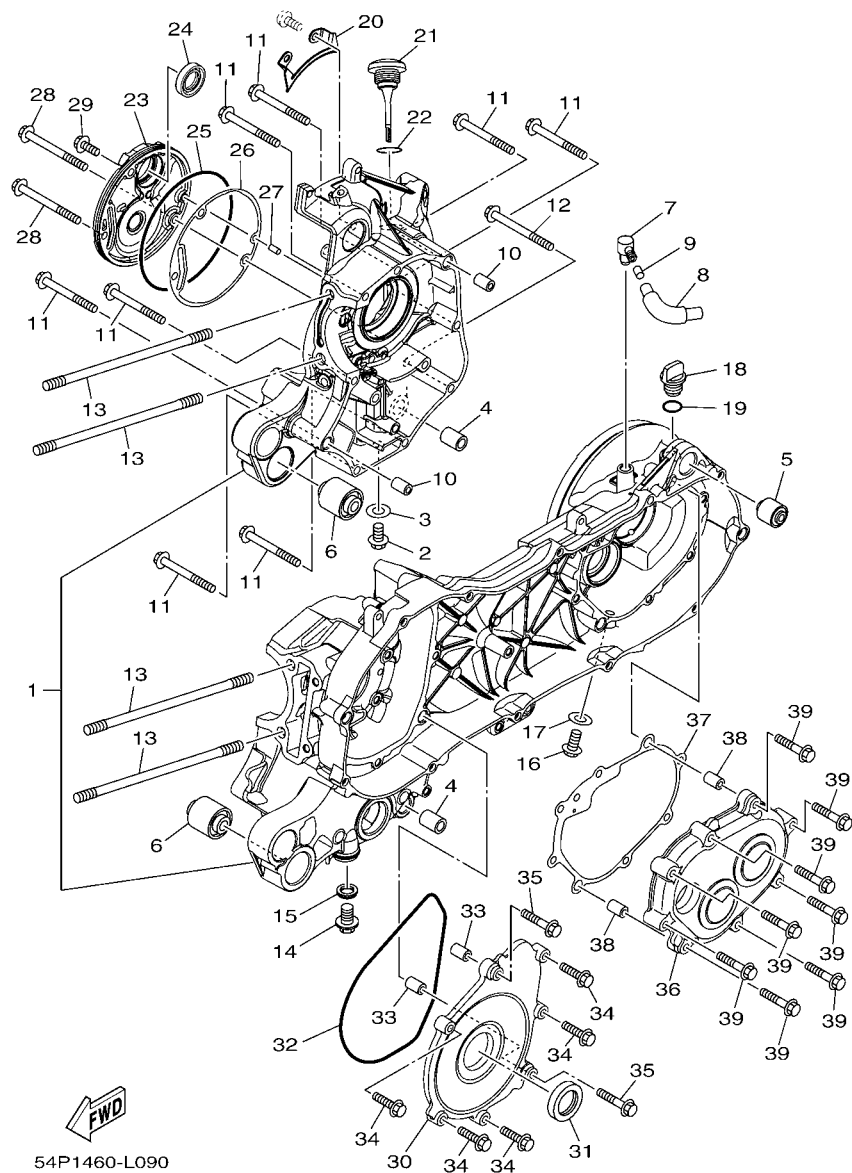
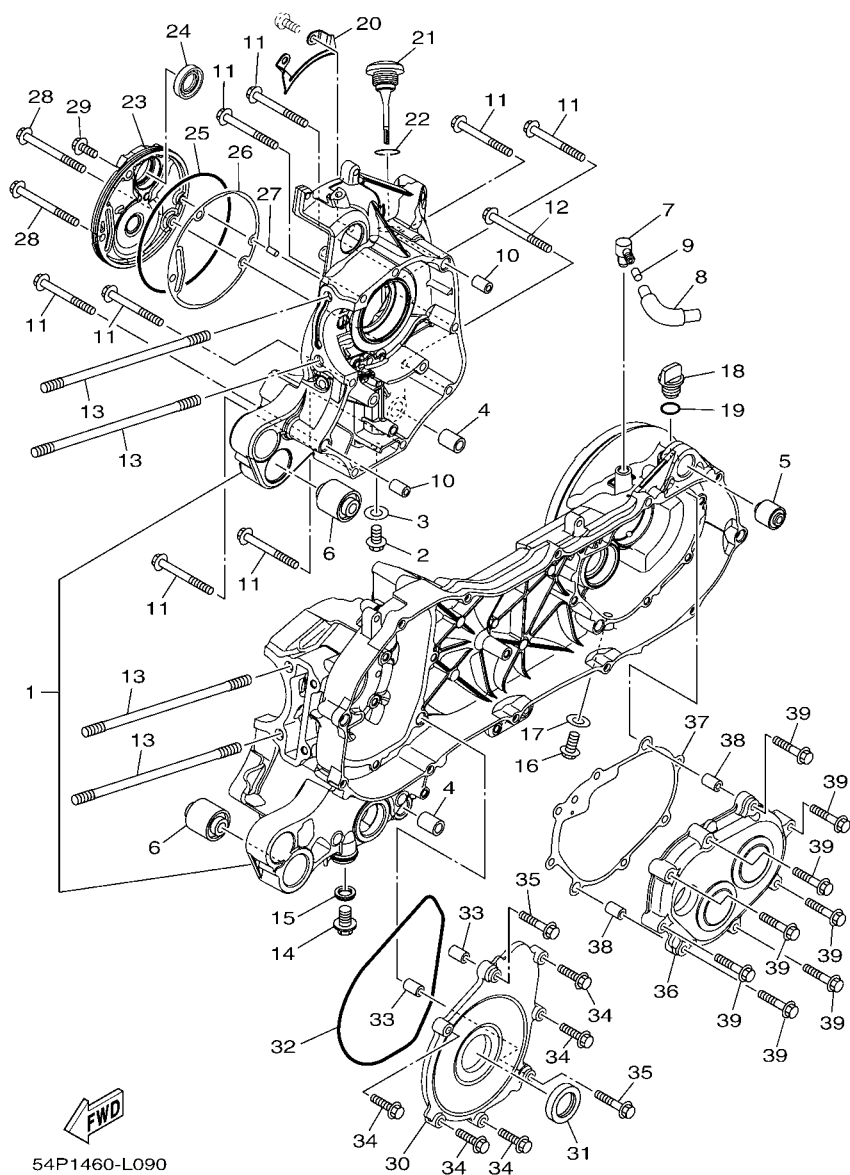


FIG. 9 CRANKCASE

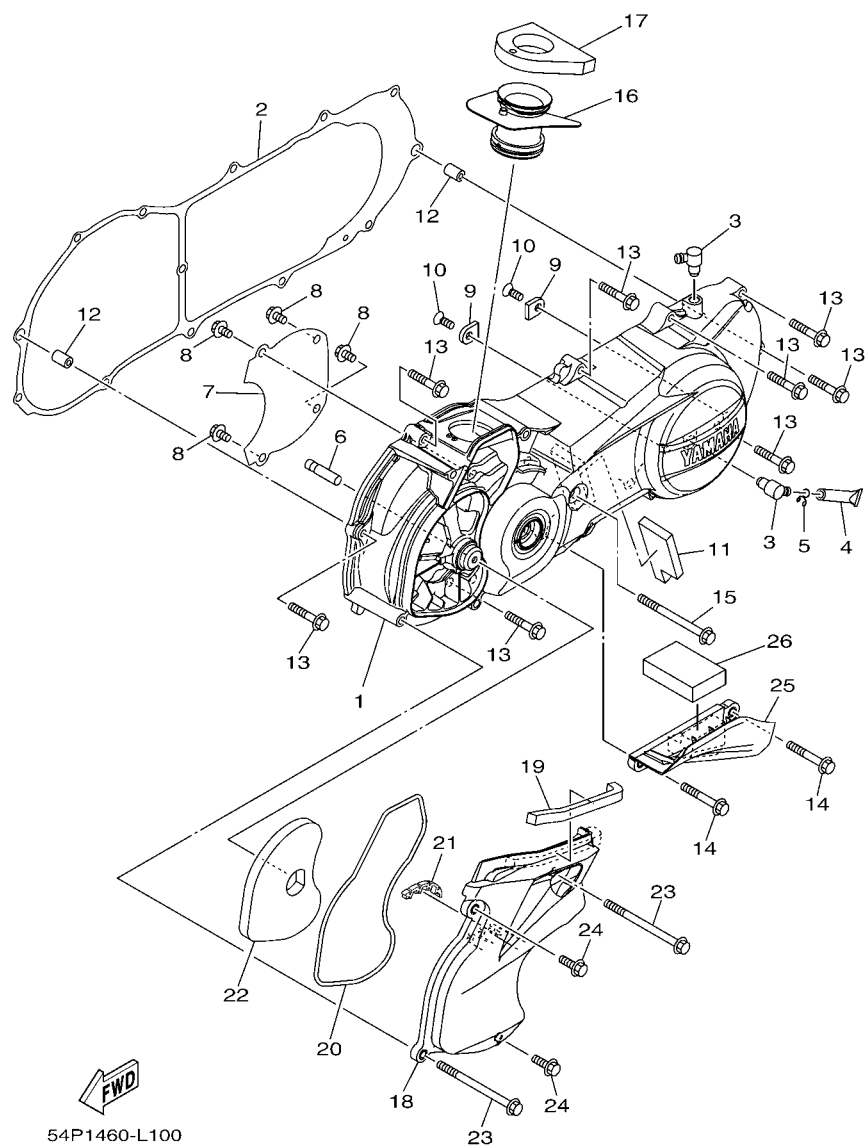
REF. NO.	PART NO.	DESCRIPTION	1KP2	1KPB			REMARKS
1	54P-E5150-00	CRANKCASE ASSY	1				
	54P-E5150-10	CRANKCASE ASSY		1			
2	95022-08012	BOLT, FLANGE	1	1			
3	90430-08119	GASKET	1	1			
4	54P-F7121-00	BUSH	2	2			
5	5MX-F2216-00	BUSH, REAR SHOCK ABSORBER	1	1			
6	90388-10805	DAMPER	2	2			
7	54P-E5371-00	BREATHER	1	1			
8	54P-E5373-00	PIPE, BREATHER	1	1			
9	14D-E5408-00	ELEMENT 2	1	1			
10	91810-14809	PIN, DOWEL	2	2			
11	95022-06060	BOLT, FLANGE	8	8			
12	95022-06070	BOLT, FLANGE	1	1			
13	90116-08843	BOLT, STUD	4	4			
14	90340-12808	PLUG, STRAIGHT SCREW	1	1			
15	4YS-E1198-00	GASKET	1	1			
16	95812-08016	BOLT, FLANGE	1	1			
17	90430-08119	GASKET	1	1			
18	5LW-E5363-00	PLUG, OIL	1	1			
19	93210-148H8	O-RING	1	1			
20	54P-E5113-00	PLATE	1	1			
21	54P-E5362-00	PLUG, OIL LEVEL	1	1			
22	5LW-E3769-00	O-RING	1	1			
23	54P-E5417-00	COVER, CAP	1	1			
24	93102-19817	OIL SEAL	1	1			
25	93211-07800	O-RING	1	1			
26	54P-E5453-00	GASKET	1	1			



**FIG. 9 CRANKCASE**

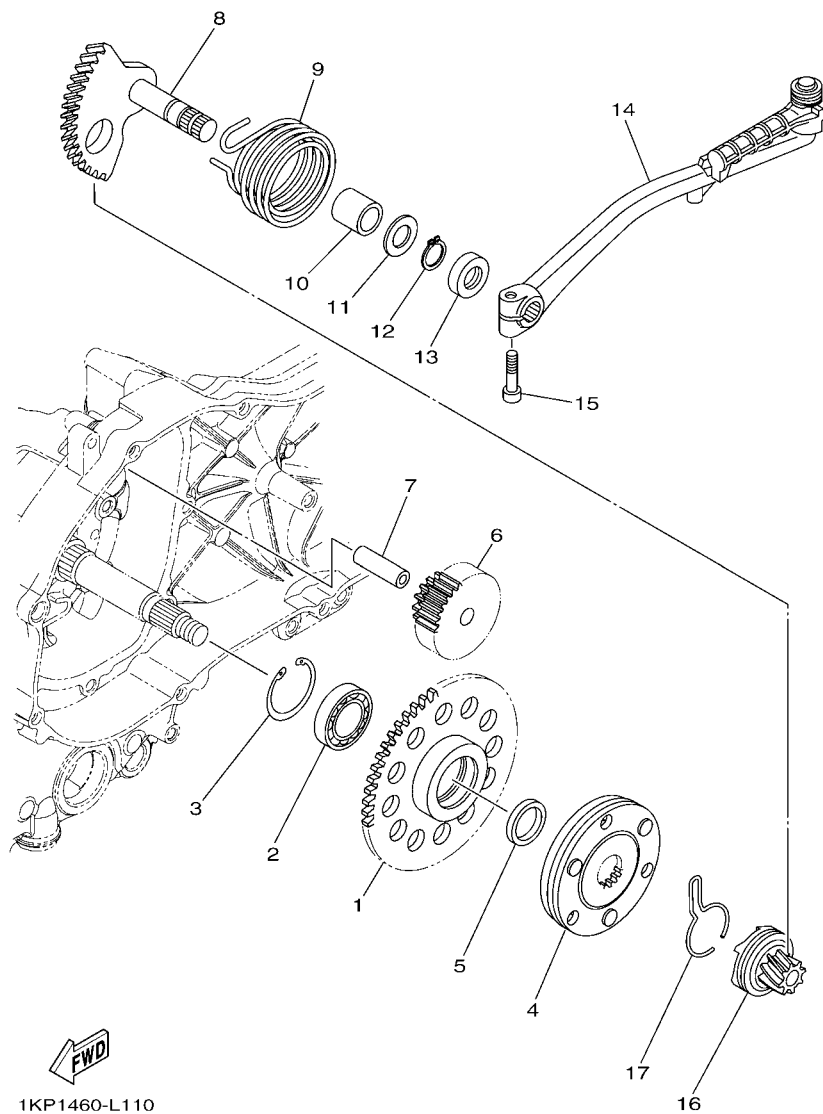
[illegible]





**FIG. 10 CRANKCASE COVER 1**

REF. NO.	PART NO.	DESCRIPTION	1KP2	1KPB		REMARKS
1	54P-E5411-00	COVER, CRANKCASE 1	1	1		
2	54P-E5451-00	GASKET, CRANKCASE COVER 1	1	1		
3	54P-E5371-00	BREATHER	2	2		
4	4ST-E443E-00	PIPE, DRAIN	1	1		
5	90467-110A3	CLIP	1	1		
6	5LW-15659-01	SHAFT	1	1		
7	54P-E5191-00	PLATE	1	1		
8	95022-06010	BOLT, FLANGE	4	4		
9	54P-E5383-00	PLATE, BEARING COVER	2	2		
10	90151-06811	SCREW, COUNTERSUNK	2	2		
11	54P-E5316-00	DAMPER 1	1	1		
12	91810-14809	PIN, DOWEL	2	2		
13	95022-06035	BOLT, FLANGE	8	8		
14	95022-06045	BOLT, FLANGE	2	2		
15	95022-06080	BOLT, FLANGE	1	1		
16	54P-E5473-00	DUCT, AIR	1	1		
17	54P-E5408-00	ELEMENT 2	1	1		
18	54P-E5471-00	DUCT, AIR	1	1		
19	90520-10811	DAMPER, PLATE	1	1		
20	54P-E5472-00	SEAL, AIR DUCT	1	1		
21	54P-E5495-00	SEAL, PROTECTOR 1	1	1		
22	54P-E5407-00	ELEMENT 1	1	1		
23	95822-06090	BOLT, FLANGE	2	2		
24	95822-06020	BOLT, FLANGE	2	2		
25	54P-E5413-00	COVER	1	1		
26	90520-15806	DAMPER, PLATE	1	1		



**FIG. 11 STARTER**

REF. NO.	PART NO.	DESCRIPTION	1KP2	1KPB			REMARKS
1	54P-E5524-00	WHEEL, STARTER	1	1			
2	93306-804Y3	BEARING	1	1			UR
	93306-804Y6	BEARING	1	1			UR
	93306-804Y4	BEARING	1	1			UR
3	93450-32837	CIRCLIP	1	1			
4	1KP-E5570-00	STARTER CLUTCH ASSY	1	1			
5	44D-E5598-00	COLLAR	1	1			
6	54P-E5512-00	GEAR, IDLER 1	1	1			
7	44D-E5521-00	SHAFT 1	1	1			
8	5TL-E5601-10	KICK SHAFT ASSY	1	1			
9	90508-32768	SPRING, TORSION	1	1			
10	90380-15811	BUSH, SOLID	1	1			
11	90201-154E8	WASHER, PLATE (T=1.0)	1	1			
12	99009-15400	CIRCLIP	1	1			
13	93102-15801	OIL SEAL	1	1			
14	1KP-E5620-00	KICK CRANK ASSY	1	1			
15	91312-06025	BOLT	1	1			
16	4VP-E5630-00	KICK PINION ASSY	1	1			
17	5MX-E5673-00	CLIP	1	1			

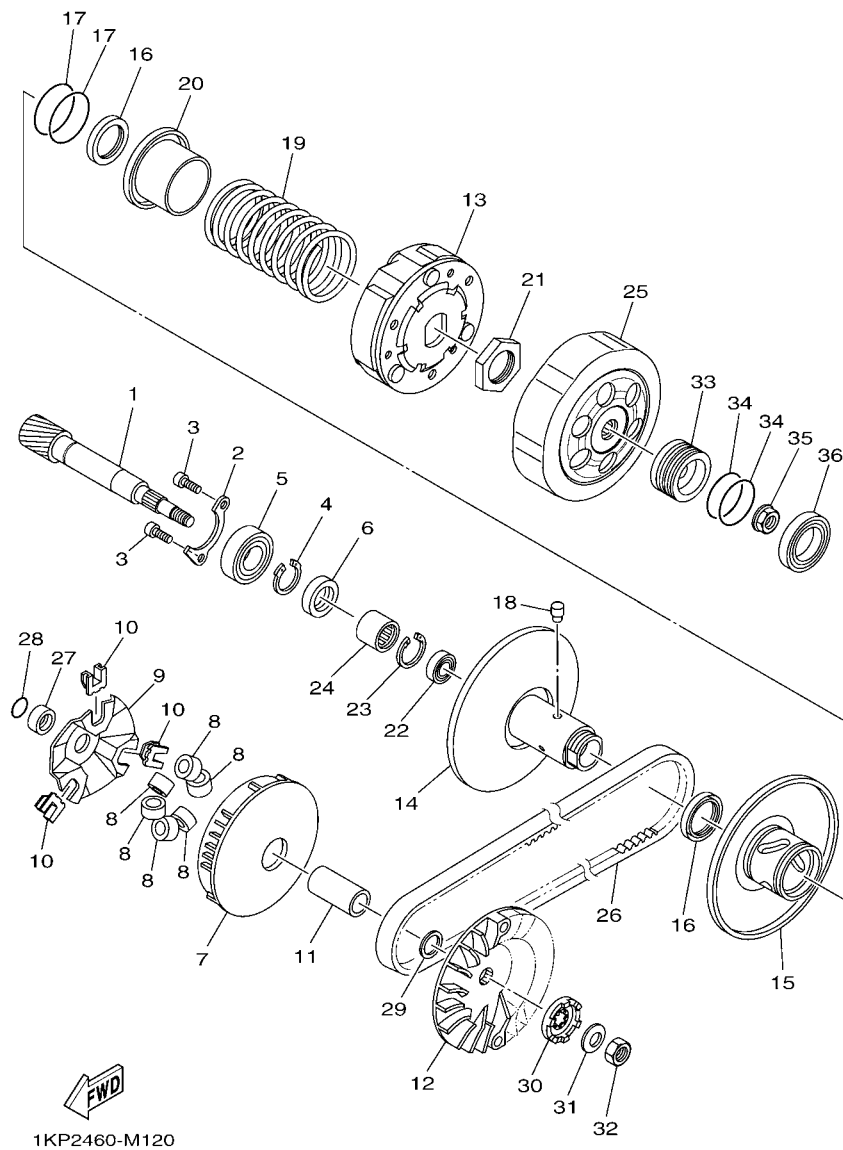


FIG. 12 CLUTCH

REF. NO.	PART NO.	DESCRIPTION	1KP2	1KPB			REMARKS
1	54P-E6111-00	GEAR, PRIMARY DRIVE	1	1			
2	54P-E7471-00	PLATE, COVER	1	1			
3	91312-06010	BOLT	2	2			
4	99009-17400	CIRCLIP	1	1			
5	93306-253Y9	BEARING	1	1			
6	93102-17803	OIL SEAL	1	1			
7	54P-E7620-00	PRIMARY SLIDING SHEAVE COMP.	1	1			
8	54P-E7632-00	WEIGHT	6	6			
9	54P-E7623-00	CAM	1	1			
10	54P-E7653-00	SLIDER	3	3			
11	54P-E7674-00	COLLAR, GUIDE	1	1			
12	54P-E7611-00	SHEAVE, PRIMARY FIXED	1	1			
13	54P-E6620-00	CLUTCH CARRIER ASSY	1	1			
14	54P-E7660-00	SECONDARY FIXED SHEAVE COMP.	1	1			
15	54P-E7670-00	SECONDARY SLIDING SHEAVE	1	1			
16	54P-E7465-00	SEAL	2	2			
17	54P-E7465-10	SEAL	2	2			
18	5TL-E7664-00	PIN, GUIDE	3	3			
19	54P-E7683-00	SPRING, SECONDARY	1	1			
20	54P-E7684-00	SEAT, SECONDARY SPRING	1	1			
21	44D-E7668-00	NUT	1	1			
22	54P-E7678-00	BEARING	1	1			
23	44D-E5744-00	CIRCLIP	1	1			
24	54P-E7678-10	BEARING	1	1			
25	54P-E6611-00	CLUTCH HOUSING COMP.	1	1			
26	54P-E7641-00	V-BELT	1	1			
27	44D-E7645-00	COLLAR	1	1			

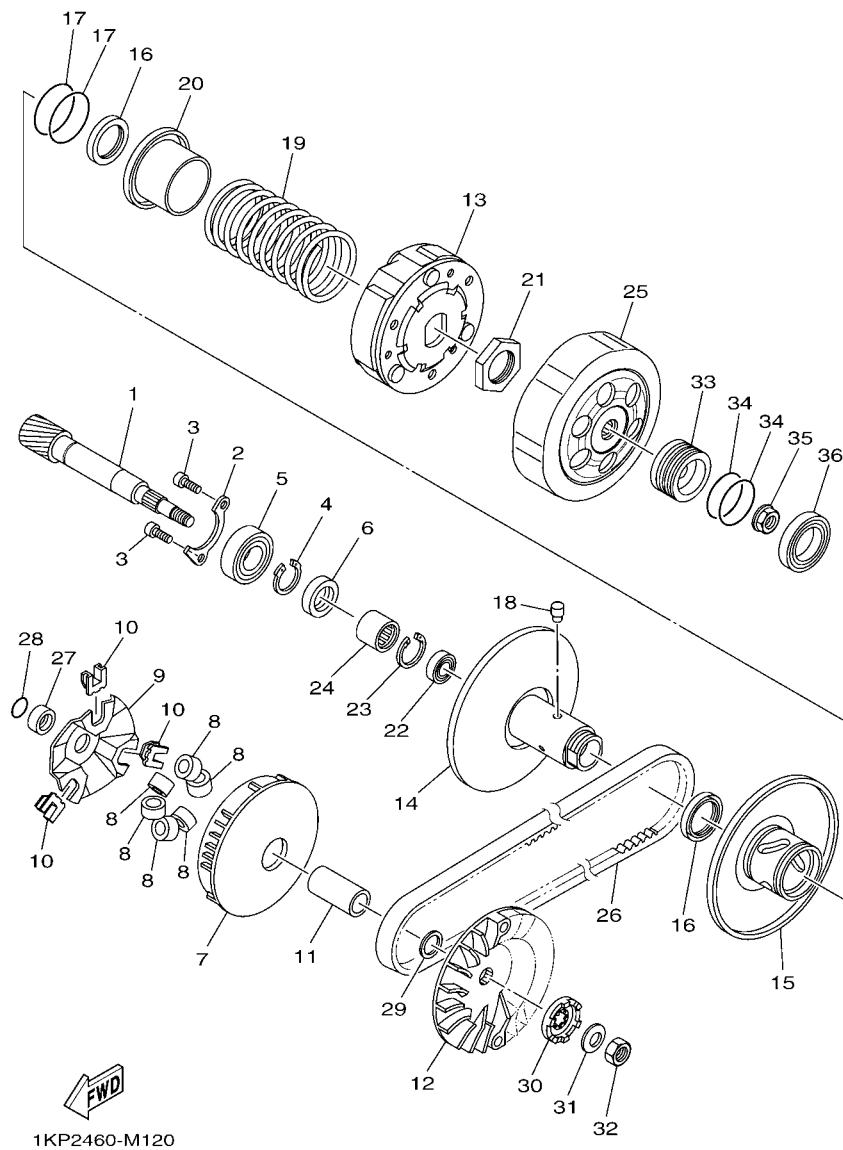
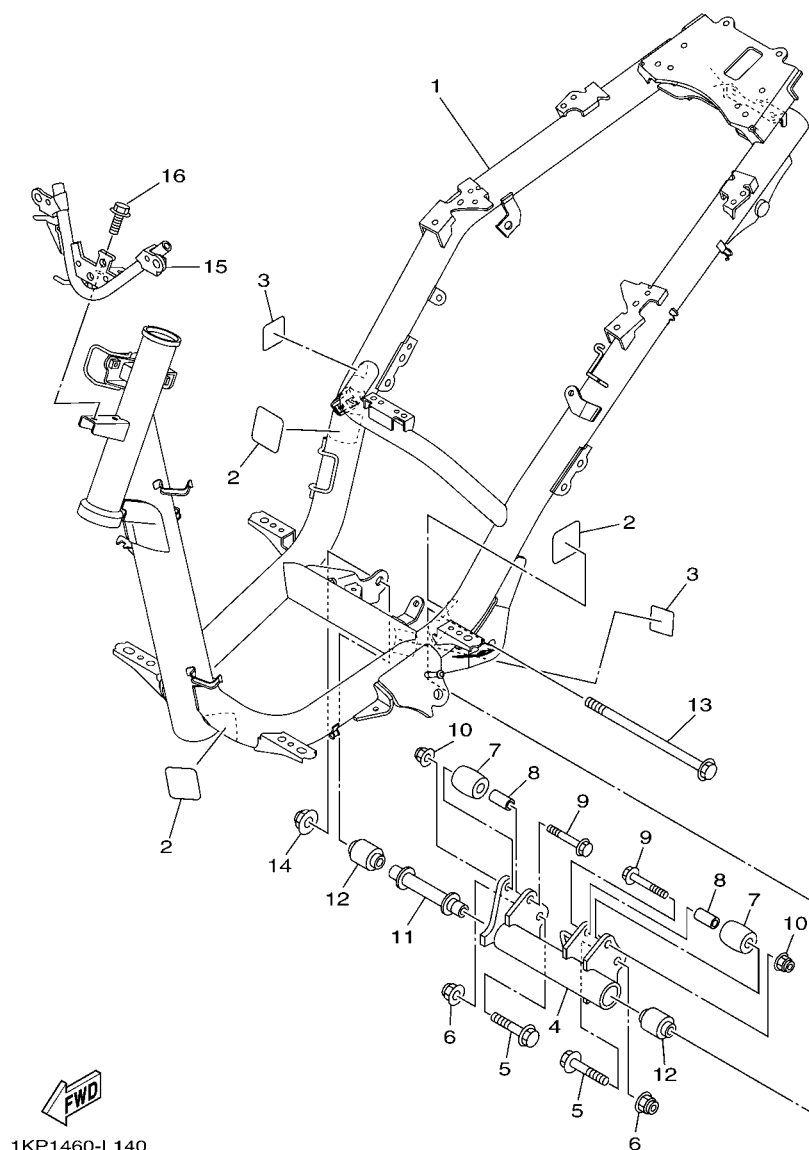


FIG. 12 CLUTCH

[illegible]

[illegible]



**FIG. 14 FRAME**

REF. NO.	PART NO.	DESCRIPTION	1KP2	1KPB			REMARKS
1	1KP-F1110-00	FRAME COMP.	1				
	1KP-F1110-10	FRAME COMP.		1			
2	54P-F1268-00	SEAL	3	3			
3	1KP-F1735-00	SEAL 2	2	2			
4	54P-F1410-00	ENGINE BRACKET COMP.	1	1			
5	90105-10283	BOLT, FLANGE	2	2			
6	95602-10200	NUT, U FLANGE	2	2			
7	44D-F7114-00	STOPPER, MAIN STAND	2	2			
8	90387-08821	COLLAR	2	2			
9	90105-088E3	BOLT, FLANGE	2	2			
10	95602-08200	NUT, SELF-LOCKING	2	2			
11	54P-F1459-00	SPACER	1	1			
12	90388-10800	DAMPER	2	2			
13	54P-F2141-00	SHAFT, PIVOT	1	1			
14	95602-10200	NUT, U FLANGE	1	1			
15	1KP-F8356-00	STAY 1	1	1			
16	95802-06010	BOLT, FLANGE	2	2			



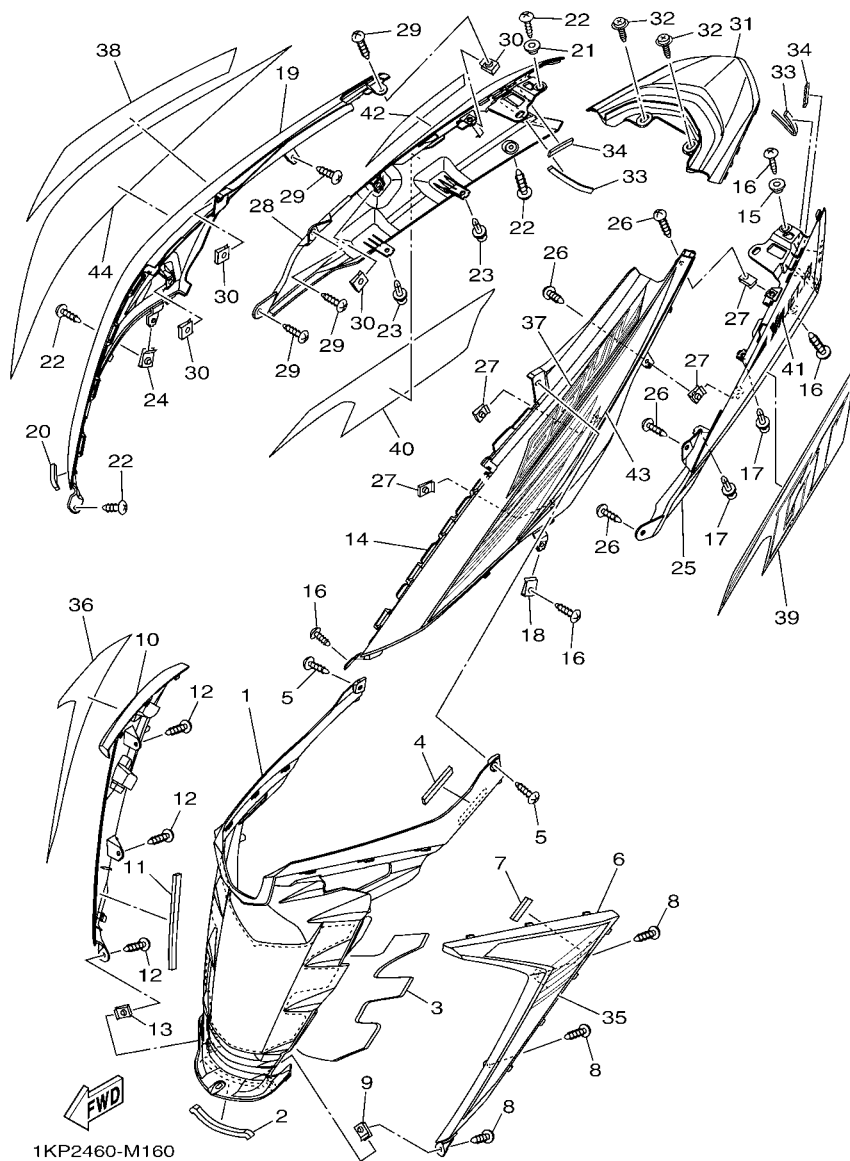


FIG. 16 SIDE COVER

REF. NO.	PART NO.	DESCRIPTION	1KP2	1KPB		REMARKS
1	1KP-F172W-00	COVER	1	1		
2	90520-08804	DAMPER, PLATE	1	1		
3	1KP-F1746-00	DAMPER	1	1		
4	90520-02819	DAMPER, PLATE	1	1		
5	97707-50016	SCREW, TRUSS HEAD TAPPING	3	3		
6	1KP-F171L-00-P0	MOLE, SIDE COVER 1	1	1		RYC1(SMX)
	1KP-F171L-00-P1	MOLE, SIDE COVER 1	1	1		RM7(WM6)
	1KP-F171L-00-P2	MOLE, SIDE COVER 1	1	1		WM6 (RM7,VPBC5,DPRMD)
7	90520-02819	DAMPER, PLATE	1	1		
8	97707-50016	SCREW, TRUSS HEAD TAPPING	3	3		
9	90183-05807	NUT, SPRING	1	1		
10	1KP-F171M-00-P0	MOLE, SIDE COVER 2	1	1		RYC1(SMX)
	1KP-F171M-00-P1	MOLE, SIDE COVER 2	1	1		RM7(WM6)
	1KP-F171M-00-P2	MOLE, SIDE COVER 2	1	1		WM6 (RM7,VPBC5,DPRMD)
11	90520-08804	DAMPER, PLATE	1	1		
12	97707-50016	SCREW, TRUSS HEAD TAPPING	3	3		
13	90183-05807	NUT, SPRING	1	1		
14	1KP-F1711-00-P7	COVER, SIDE 1	1			UR FOR SMX
	1KP-F1711-00-P1	COVER, SIDE 1	1			UR FOR WM6
	1KP-F1711-00-P0	COVER, SIDE 1	1			UR FOR RM7
	1KP-F1711-00-P9	COVER, SIDE 1	1			UR FOR VPBC5
	1KP-F1711-00-P6	COVER, SIDE 1	1			UR FOR DPRMD
	1KP-F1711-10-P7	COVER, SIDE 1		1		UR FOR SMX
	1KP-F1711-10-P2	COVER, SIDE 1		1		UR FOR WM6
	1KP-F1711-10-P1	COVER, SIDE 1		1		UR FOR RM7
	1KP-F1711-10-P8	COVER, SIDE 1		1		UR FOR VPBC5
	1KP-F1711-10-P5	COVER, SIDE 1		1		UR FOR DPRMD



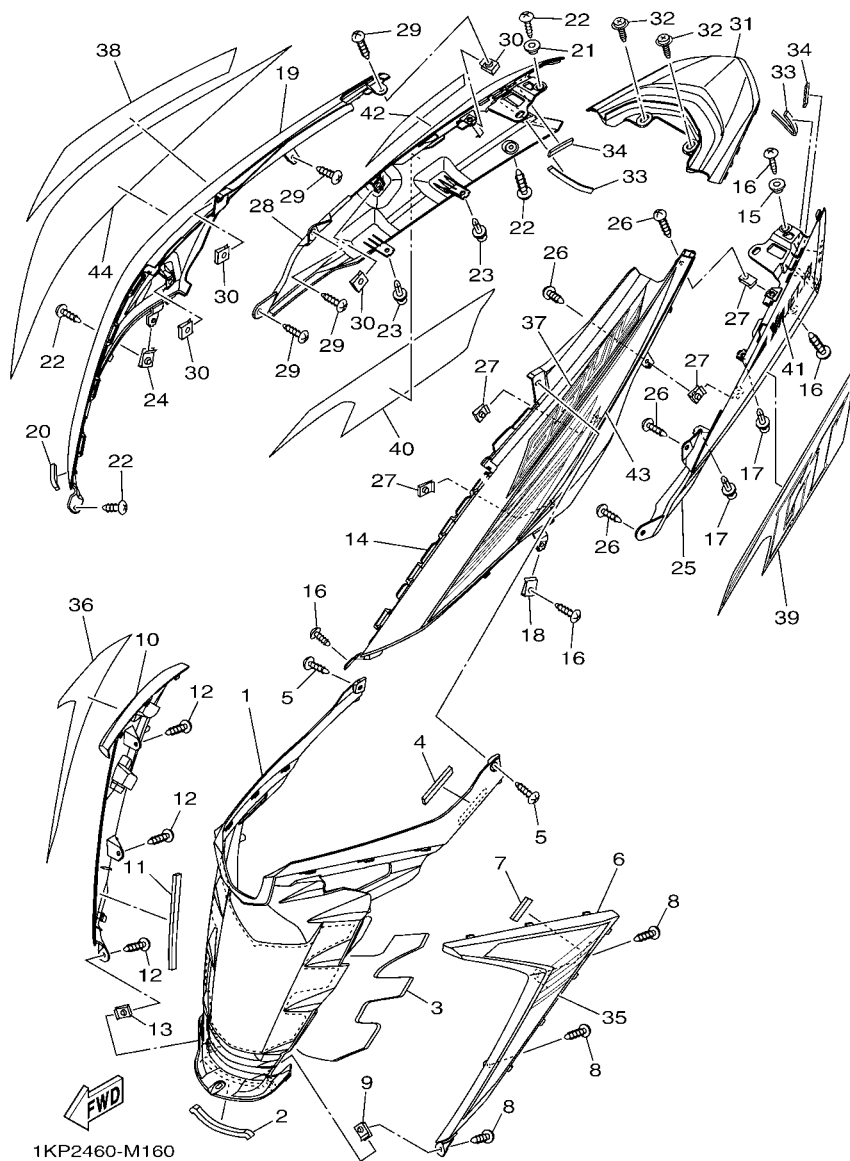
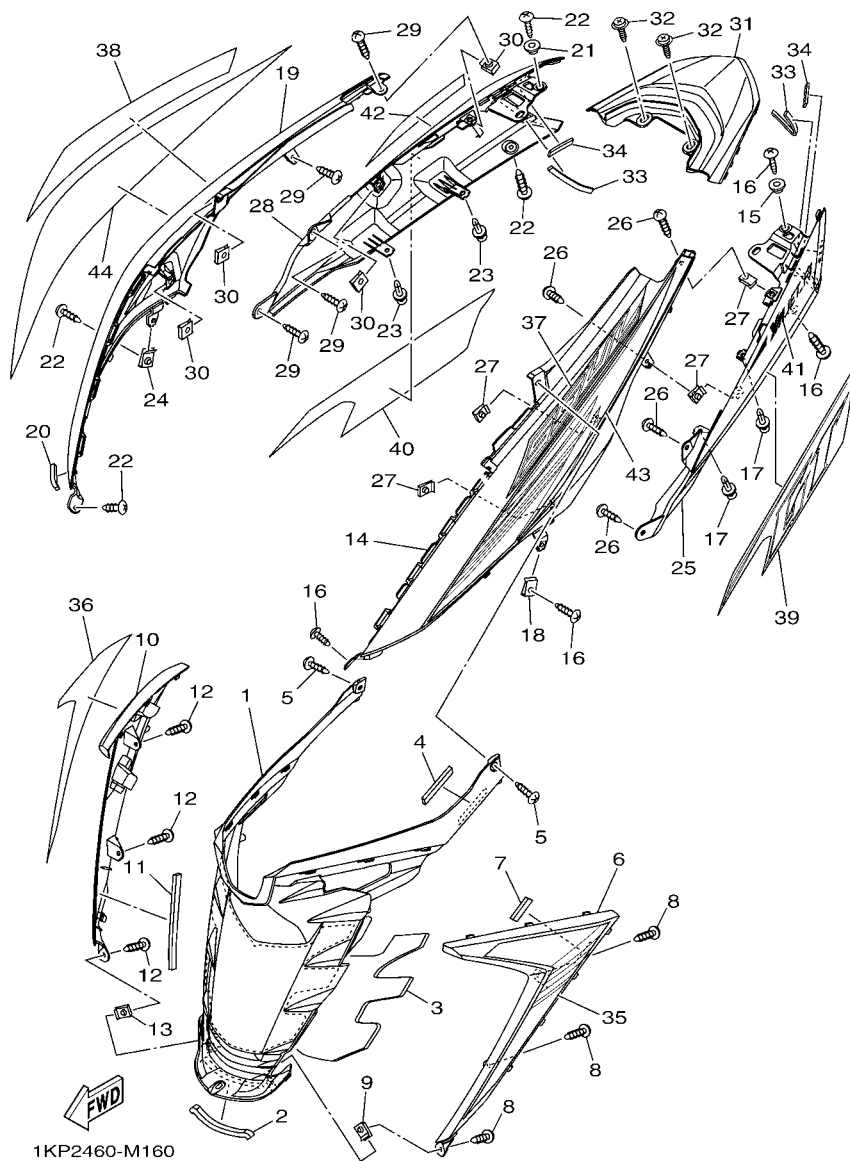


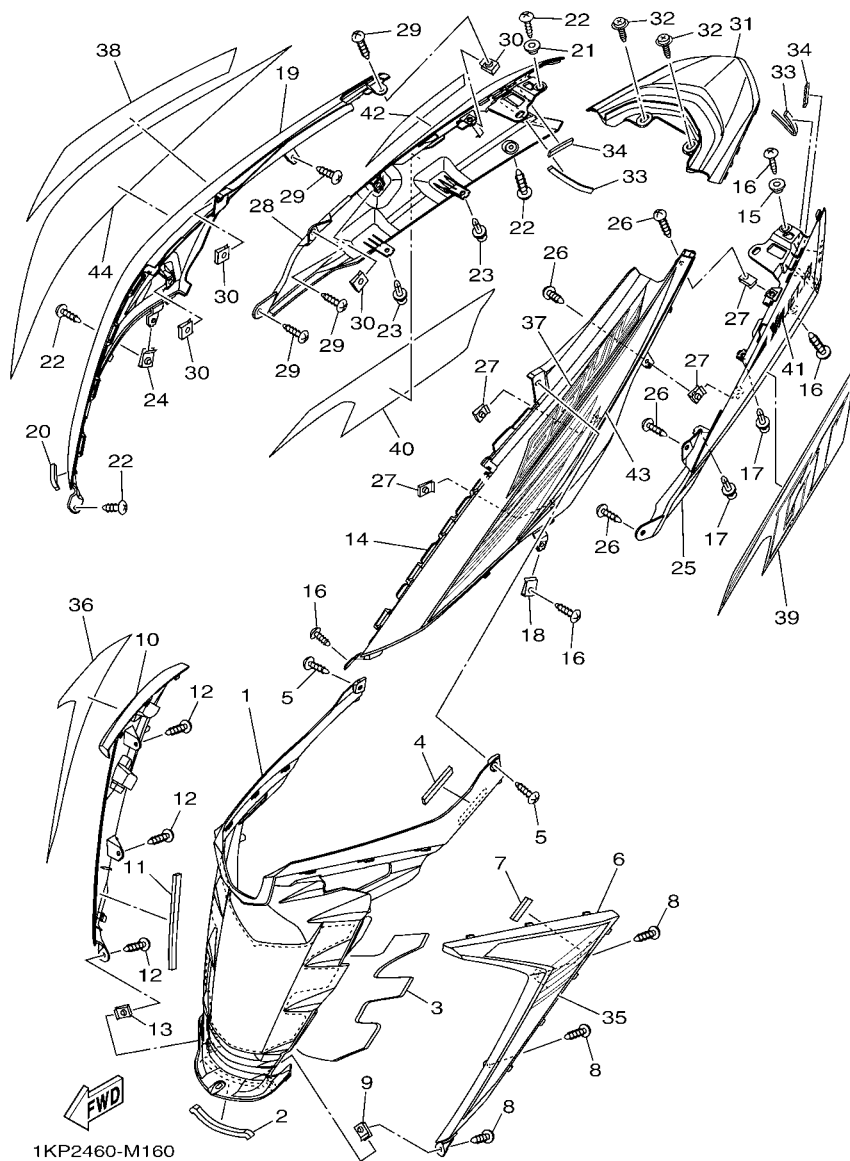
FIG. 16 SIDE COVER

REF. NO.	PART NO.	DESCRIPTION	1KP2	1KPB		REMARKS
15	90387-05820	COLLAR	1	1		
16	97707-50016	SCREW, TRUSS HEAD TAPPING	4	4		
17	90269-06812	RIVET	2	2		
18	90183-05807	NUT, SPRING	1	1		
19	1KP-F1721-00-P7	COVER, SIDE 2	1			UR FOR SMX
---	1KP-F1721-00-P1	COVER, SIDE 2	1			UR FOR WM6
	1KP-F1721-00-P0	COVER, SIDE 2	1			UR FOR RM7
	1KP-F1721-00-P8	COVER, SIDE 2	1			UR FOR VPBC5
	1KP-F1721-00-P6	COVER, SIDE 2	1			UR FOR DPRMD
	1KP-F1721-10-P7	COVER, SIDE 2		1		UR FOR SMX
---	1KP-F1721-10-P2	COVER, SIDE 2	1			UR FOR WM6
	1KP-F1721-10-P1	COVER, SIDE 2		1		UR FOR RM7
	1KP-F1721-10-P8	COVER, SIDE 2		1		UR FOR VPBC5
	1KP-F1721-10-P5	COVER, SIDE 2		1		UR FOR DPRMD
20	90520-05812	DAMPER, PLATE	1	1		
---	21 90387-05820	COLLAR	1	1		
22	97707-50016	SCREW, TRUSS HEAD TAPPING	4	4		
23	90269-06812	RIVET	2	2		
24	90183-05807	NUT, SPRING	1	1		
25	1KP-F1731-00-P0	COVER, SIDE 3	1			SMX
---	1KP-F1731-10-P0	COVER, SIDE 3		1		SMX
26	97707-50012	SCREW, TRUSS HEAD TAPPING	4	4		
27	90183-05807	NUT, SPRING	4	4		
28	1KP-F1741-00-P0	COVER, SIDE 4	1			SMX
	1KP-F1741-10-P0	COVER, SIDE 4		1		SMX
---	29 97707-50012	SCREW, TRUSS HEAD TAPPING	4	4		
30	90183-05807	NUT, SPRING	4	4		



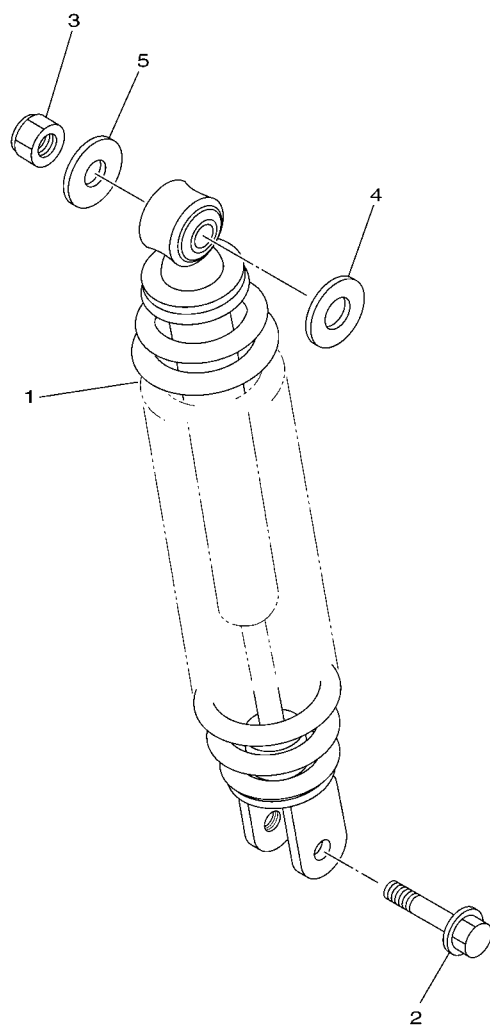
**FIG. 16 SIDE COVER**

REF. NO.	PART NO.	DESCRIPTION	1KP2	1KPB		REMARKS
31	1KP-F171E-00-P7	COVER, SIDE 5	1			UR FOR SMX
	1KP-F171E-00-P1	COVER, SIDE 5	1			UR FOR WM6
	1KP-F171E-00-P0	COVER, SIDE 5	1			UR FOR RM7
	1KP-F171E-00-P8	COVER, SIDE 5	1			UR FOR VPBC5
	1KP-F171E-00-P6	COVER, SIDE 5	1			UR FOR DPRMD
---	1KP-F171E-10-P7	COVER, SIDE 5	1			UR FOR SMX
	1KP-F171E-10-P2	COVER, SIDE 5	1			UR FOR WM6
	1KP-F171E-10-P1	COVER, SIDE 5	1			UR FOR RM7
	1KP-F171E-10-P8	COVER, SIDE 5	1			UR FOR VPBC5
	1KP-F171E-10-P5	COVER, SIDE 5	1			UR FOR DPRMD
---	32	90159-06810	2	2		
	33	1UB-F8372-00	2	2		
	34	90520-02819	2	2		
	35	1KP-F173E-70	1	1		UR FOR SMX
	1KP-F173E-80	GRAPHIC 1	1	1		UR FOR WM6
---	1KP-F173E-90	GRAPHIC 1	1	1		UR FOR RM7
	1KP-F173E-A0	GRAPHIC 1	1	1		UR FOR VPBC5
	1KP-F173E-B0	GRAPHIC 1	1	1		UR FOR DPRMD
36	1KP-F173F-70	GRAPHIC 2	1	1		UR FOR SMX
	1KP-F173F-80	GRAPHIC 2	1	1		UR FOR WM6
---	1KP-F173F-90	GRAPHIC 2	1	1		UR FOR RM7
	1KP-F173F-A0	GRAPHIC 2	1	1		UR FOR VPBC5
	1KP-F173F-B0	GRAPHIC 2	1	1		UR FOR DPRMD
37	1KP-F174G-70	GRAPHIC 3	1	1		UR FOR SMX
	1KP-F174G-80	GRAPHIC 3	1	1		UR FOR WM6
---	1KP-F174G-90	GRAPHIC 3	1	1		UR FOR RM7
	1KP-F174G-A0	GRAPHIC 3	1	1		UR FOR VPBC5



**FIG. 16 SIDE COVER**

REF. NO.	PART NO.	DESCRIPTION	1KP2	1KPB		REMARKS
37	1KP-F174G-B0	GRAPHIC 3	1	1		UR FOR DPRMD
38	1KP-F174H-70	GRAPHIC 4	1	1		UR FOR SMX
	1KP-F174H-80	GRAPHIC 4	1	1		UR FOR WM6
	1KP-F174H-90	GRAPHIC 4	1	1		UR FOR RM7
	1KP-F174H-A0	GRAPHIC 4	1	1		UR FOR VPBC5
---	1KP-F174H-B0	GRAPHIC 4	1	1		UR FOR DPRMD
39	1KP-F174J-00	GRAPHIC 5	1	1		UR FOR SMX
	1KP-F174J-10	GRAPHIC 5	1	1		UR FOR WM6,RM7
	1KP-F174J-30	GRAPHIC 5	1	1		UR FOR VPBC5,DPRMD
40	1KP-F174K-00	GRAPHIC 6	1	1		UR FOR SMX
---	1KP-F174K-10	GRAPHIC 6	1	1		UR FOR WM6,RM7
	1KP-F174K-30	GRAPHIC 6	1	1		UR FOR VPBC5,DPRMD
41	1KP-F173X-00	GRAPHIC 7	1	1		
42	1KP-F173Y-00	GRAPHIC 8	1	1		
43	1KP-F17A1-00	GRAPHIC 13	1	1		UR FOR SMX
---	1KP-F17A1-10	GRAPHIC 13	1	1		UR FOR WM6
	1KP-F17A1-20	GRAPHIC 13	1	1		UR FOR RM7
	1KP-F17A1-30	GRAPHIC 13	1	1		UR FOR VPBC5
	1KP-F17A1-40	GRAPHIC 13	1	1		UR FOR DPRMD
44	1KP-F17A2-00	GRAPHIC 14	1	1		UR FOR SMX
---	1KP-F17A2-10	GRAPHIC 14	1	1		UR FOR WM6
	1KP-F17A2-20	GRAPHIC 14	1	1		UR FOR RM7
	1KP-F17A2-30	GRAPHIC 14	1	1		UR FOR VPBC5
	1KP-F17A2-40	GRAPHIC 14	1	1		UR FOR DPRMD
---						



**FIG. 17 REAR ARM & SUSPENSION**

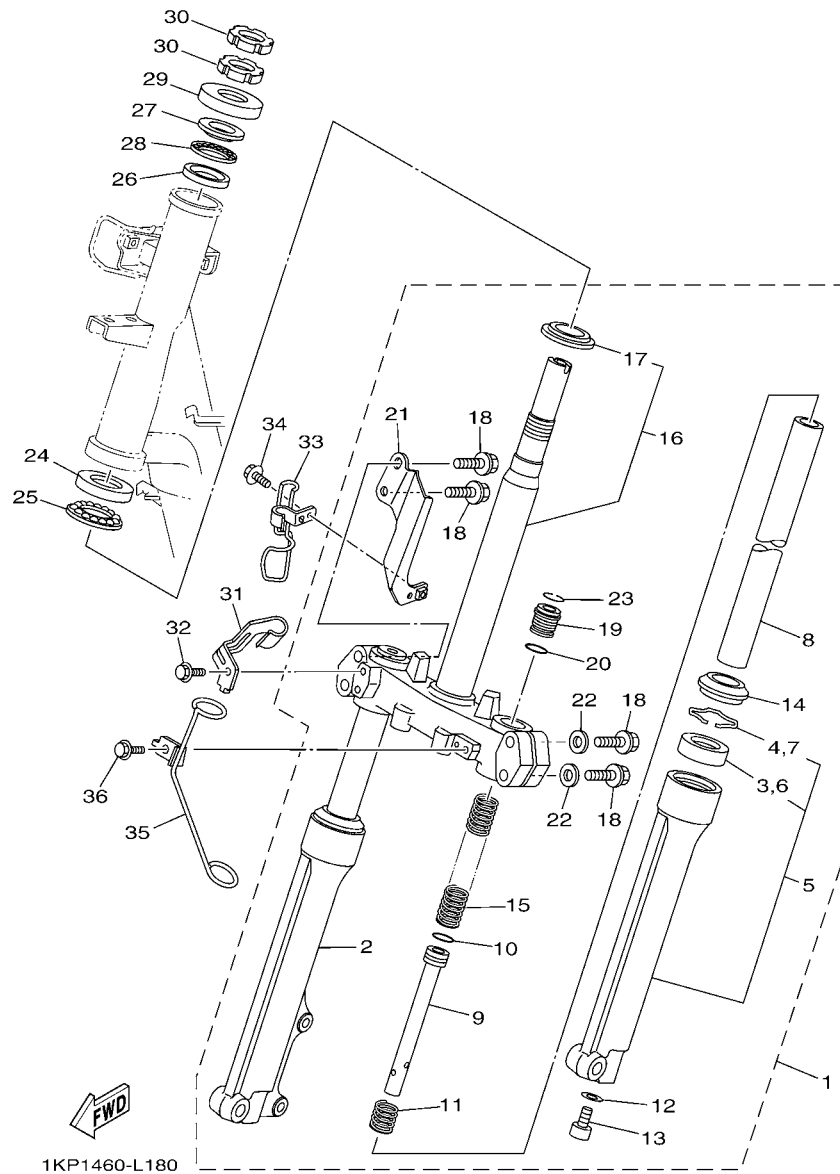


FIG. 18 STEERING

REF. NO.	PART NO.	DESCRIPTION	1KP2	1KPB			REMARKS
1	54P-F3100-10	FRONT FORK ASSY	1	1			
2	54P-F3136-10	.TUBE, OUTER (RIGHT)	1	1			
3	3AY-F3145-00	..OIL SEAL	1	1			
4	5P0-F3156-00	..RING, SNAP	1	1			
5	54P-F3126-10	.TUBE, OUTER (LEFT)	1	1			
6	3AY-F3145-00	..OIL SEAL	1	1			
7	5P0-F3156-00	..RING, SNAP	1	1			
8	54P-F3110-10	.INNER TUBE COMP.1	2	2			
9	28D-F3170-00	.CYLINDER COMP., FRONT FORK	2	2			
10	2JG-F3157-00	.RING, PISTON	2	2			
11	5D9-F3152-00	.SPRING, SUB	2	2			
12	2BU-F3158-00	.GASKET	2	2			
13	278-F3181-50	.BOLT, HEXAGON SOCKET HEAD	2	2			
14	5LM-F3144-00	.SEAL, DUST	2	2			
15	54P-F3141-10	.SPRING, FRONT FORK	2	2			
16	54P-F3340-10	..UNDER BRACKET COMP.	1	1			
17	4FP-F3411-10	..RACE, BALL 1	1	1			
18	4D0-F3346-00	.BOLT 1	4	4			
19	1FC-F3111-10	.BOLT, CAP	2	2			
20	2JG-F3147-00	.O-RING	2	2			
21	54P-F334G-00	.BRACKET 1	1	1			
22	4D0-F3165-00	.WASHER, FELT	2	2			
23	5P0-F3153-00	.RING, SNAP	1	1			
24	28D-F3412-00	RACE, BALL 2	1	1			
25	5TL-2341E-00	RETAINER, BALL BEARING (16)	1	1			
26	54P-F3412-00	RACE, BALL 2	1	1			
27	54P-F3411-00	RACE, BALL 1	1	1			

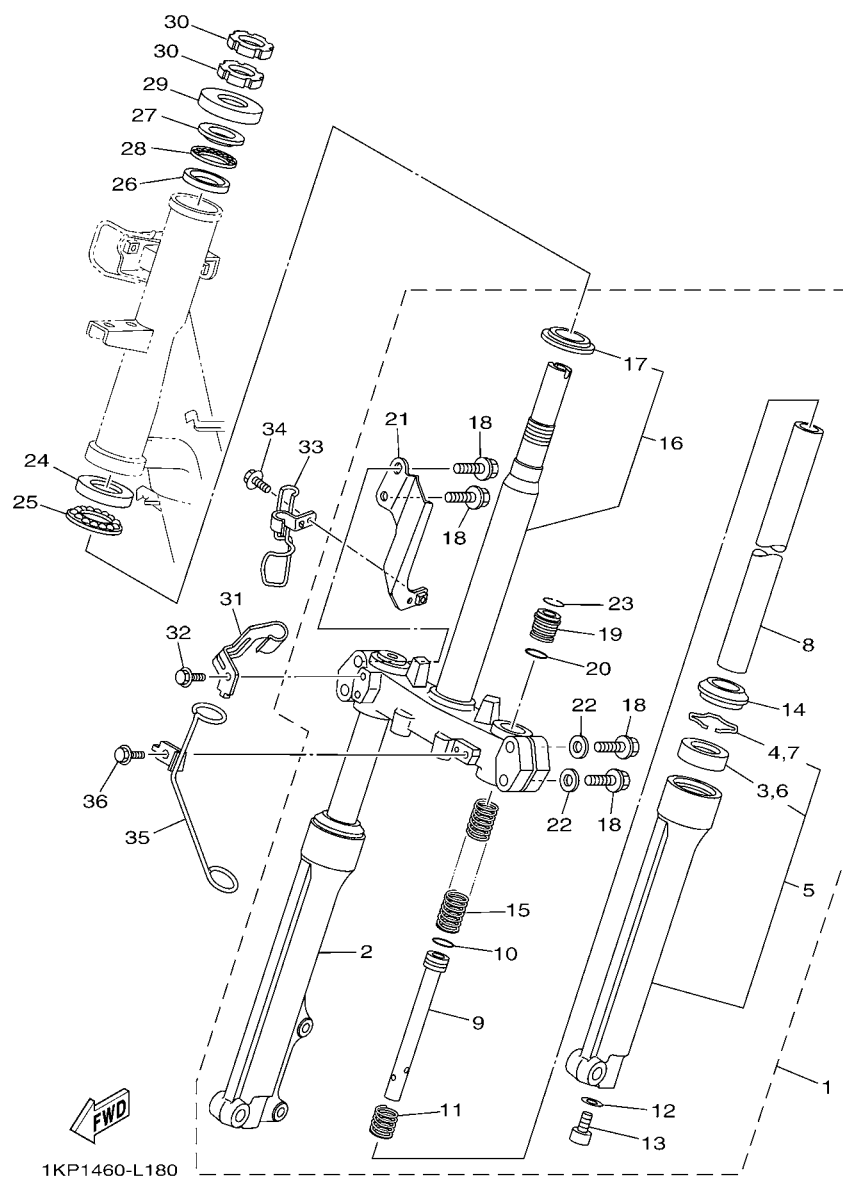
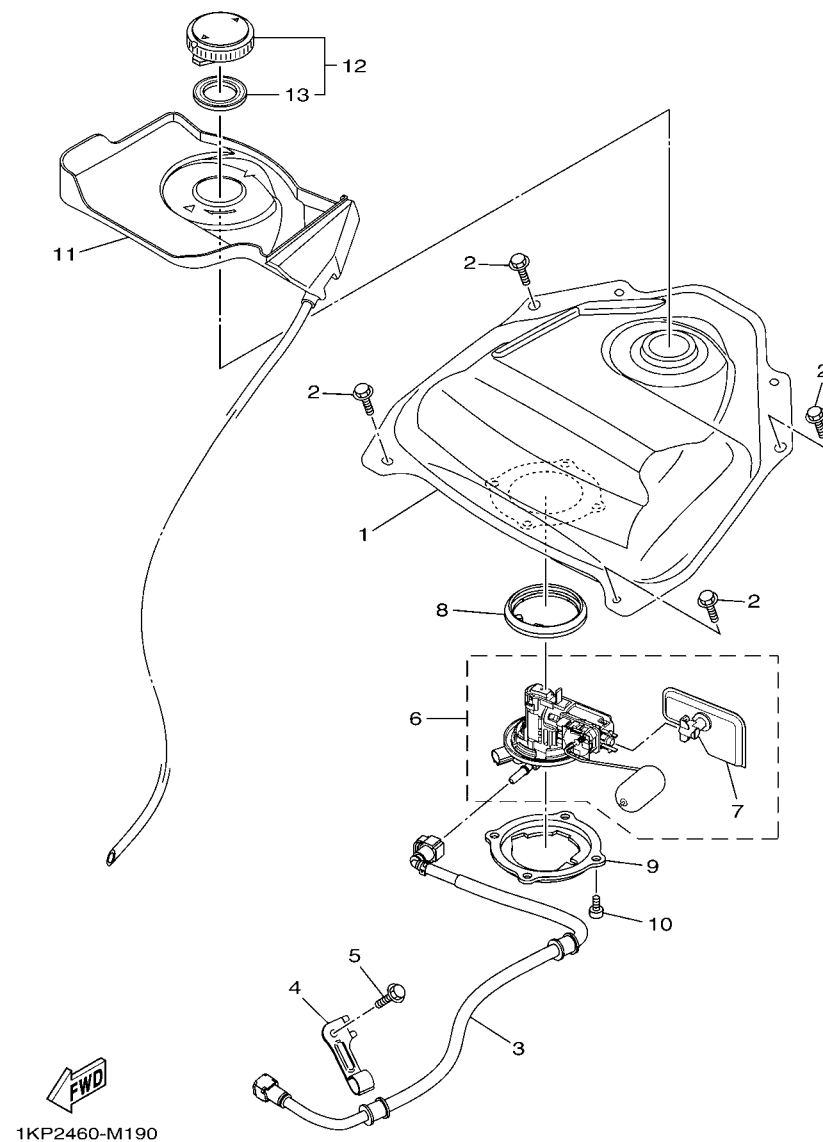


FIG. 18 STEERING

[illegible]



**FIG. 19 FUEL TANK**

<b>REF. NO.</b>	<b>PART NO.</b>	<b>DESCRIPTION</b>	<b>1KP2</b>	<b>1KPB</b>			<b>REMARKS</b>
1	54P-F4110-00	FUEL TANK COMP.	1				
	54P-F4110-10	FUEL TANK COMP.		1			
2	90119-06044	BOLT, WITH WASHER	4	4			
3	54P-E3971-00	PIPE, FUEL 1	1	1			
4	54P-F419F-00	BRACKET, CANISTOR	1	1			
5	95022-06010	BOLT, FLANGE	1	1			
6	54P-E3907-10	FUEL PUMP COMP.	1	1			
7	54P-E3915-00	.FILTER	1	1			
8	54P-F414G-00	SEAL	1	1			
9	54P-F4491-00	BRACKET, FUEL PUMP	1	1			
10	91312-05010	BOLT	4	4			
11	1KP-F414A-00	COVER, FILLER	1				
	1KP-F414A-01	COVER, FILLER		1			
12	4YY-F4610-00	CAP ASSY	1				
	4YY-F4610-10	CAP ASSY		1			
13	4YY-F4612-00	.PACKING, CAP	1				
	4YY-F4612-10	.PACKING, CAP		1			

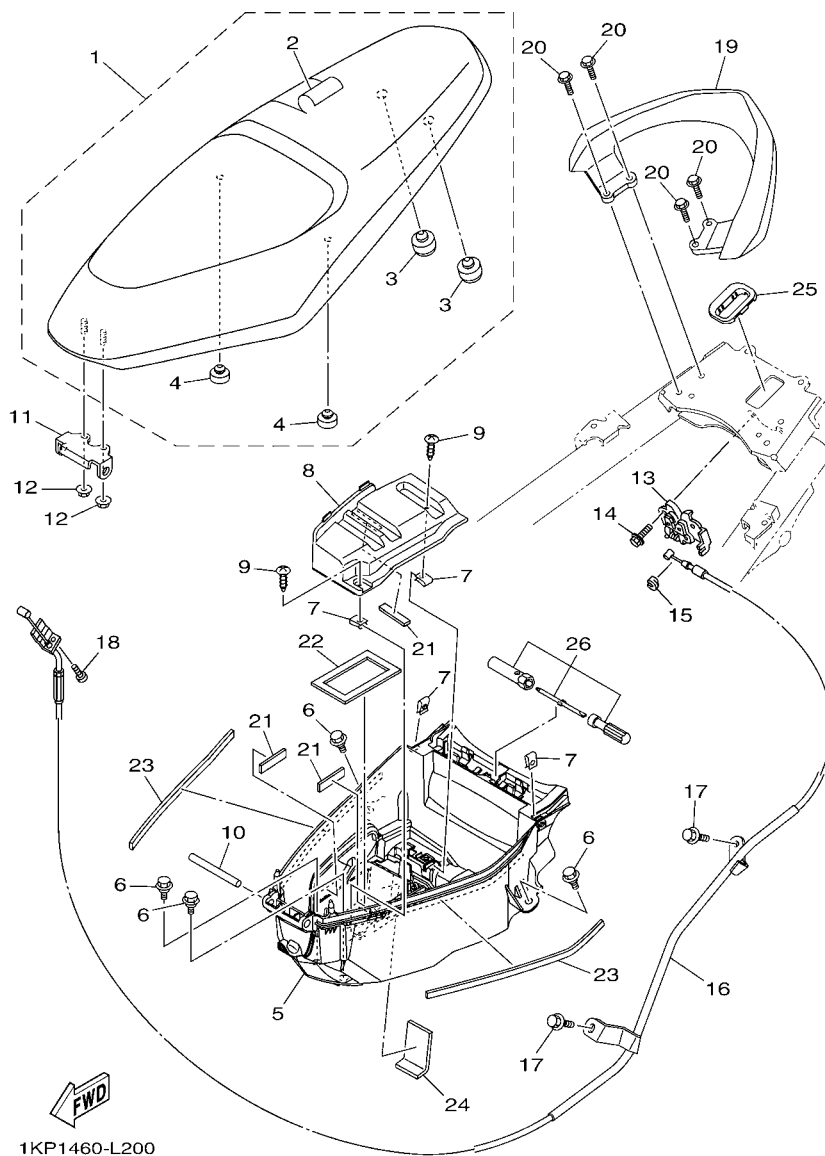
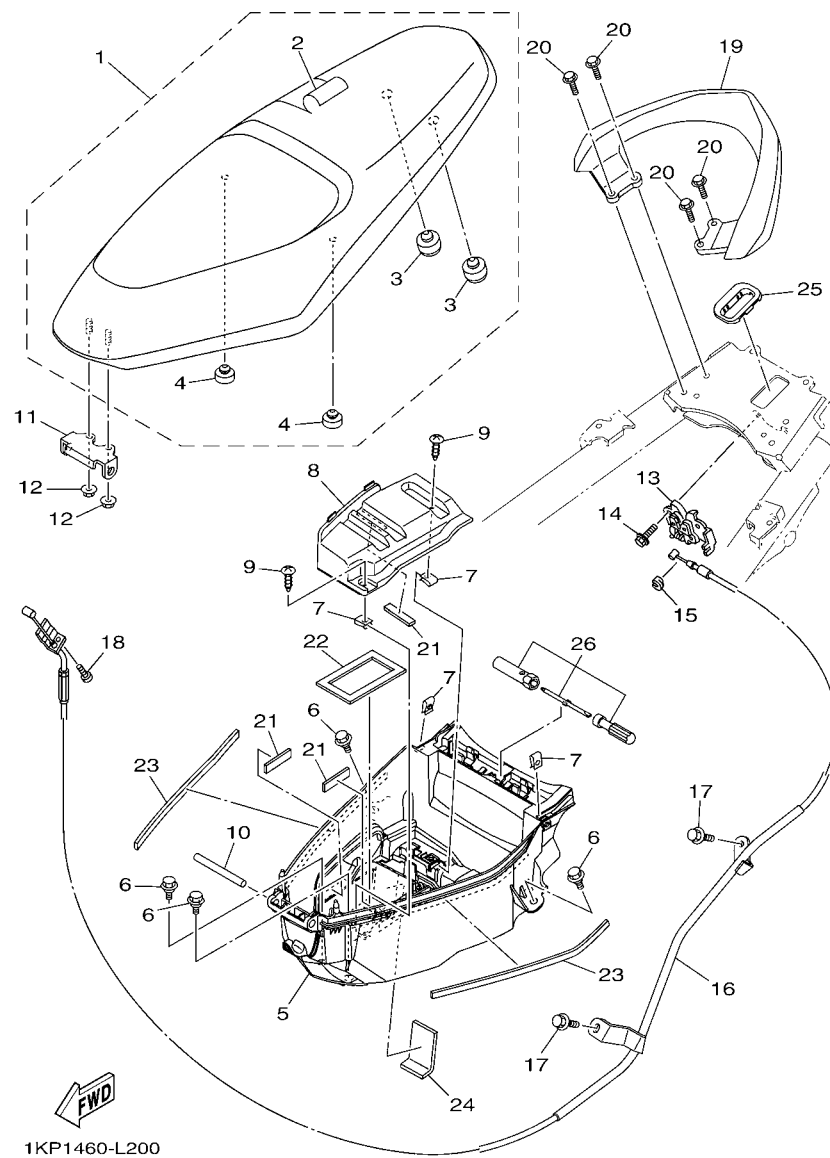


FIG. 20 SEAT

REF. NO.	PART NO.	DESCRIPTION	1KP2	1KPB			REMARKS
1	1KP-F4730-00	DOUBLE SEAT ASSY	1	1			
2	1KP-F470F-00	.SEAT COVER COMP.	1	1			
3	5D9-F4741-00	.PAD, SEAT	2	2			
4	3C1-F4741-00	.PAD, SEAT	2	2			
5	1KP-F4704-00	BOX ASSY	1	1			
6	90109-06202	BOLT	4	4			
7	90183-05807	NUT, SPRING	4	4			
8	54P-H2129-00	COVER, BATTERY	1	1			
9	97707-50012	SCREW, TRUSS HEAD TAPPING	2	2			
10	5TL-F4727-00	PIN, SEAT FITTING	1	1			
11	54P-F4726-00	HINGE, SEAT	1	1			
12	95702-06500	NUT, FLANGE	2	2			
13	40D-F4780-01	SEAT LOCK ASSY	1	1			
14	95022-06010	BOLT, FLANGE	2	2			
15	1S7-F4768-00	STOPPER	1	1			
16	1KP-F478E-00	CABLE, SEAT LOCK	1	1			
17	95802-06010	BOLT, FLANGE	2	2			
18	98507-05010	SCREW, PAN HEAD	1	1			
19	1KP-F4773-00-P7	HANDLE, SEAT	1	1			RYC1(SMX)
	1KP-F4773-00-P0	HANDLE, SEAT	1	1			RM7(WM6)
	1KP-F4773-00-P1	HANDLE, SEAT	1	1			WM6 (RM7,VPBC5,DPRMD)
20	95822-06020	BOLT, FLANGE	4	4			
21	90520-03806	DAMPER, PLATE	3	3			
22	1KP-H2176-00	DAMPER	1	1			
23	90520-03809	DAMPER, PLATE	2	2			
24	90520-03808	DAMPER, PLATE	1	1			
25	1KP-F476U-00	PROTECTOR,1	1	1			





**FIG. 20 SEAT**

[illegible]

[illegible]



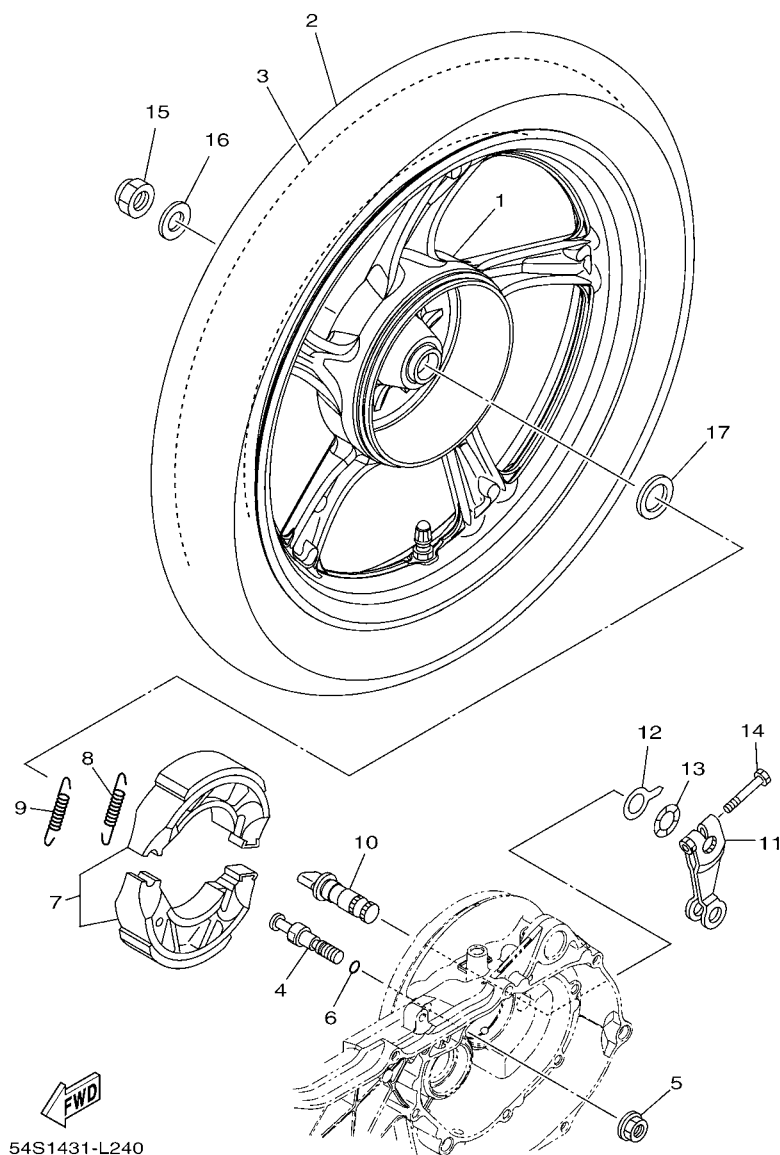
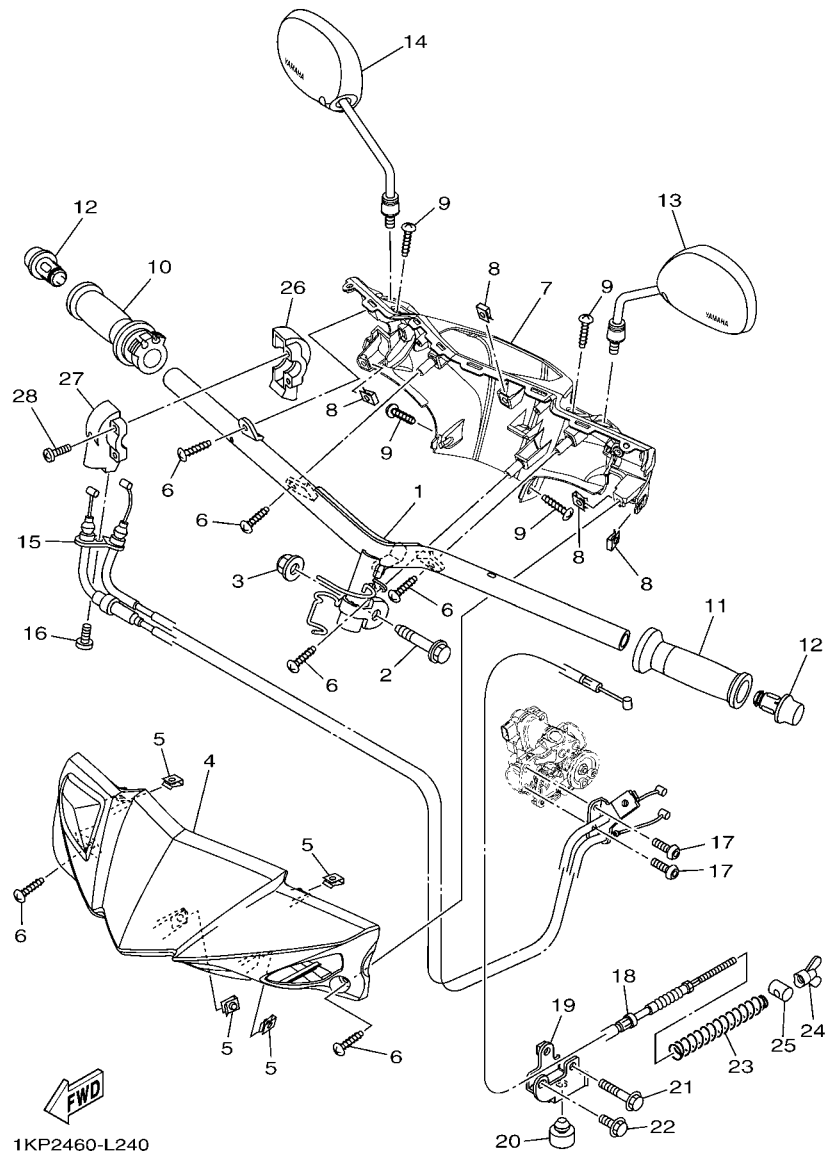


FIG. 23 REAR WHEEL

REF. NO.	PART NO.	DESCRIPTION	1KP2	1KPB			REMARKS
1	54P-F5338-00-1X	CAST WHEEL, REAR	1	1			YB/WSA
2	94108-14802	TIRE (80/90-14M/C 40P NR76)	1	1			INOUE
3	94208-14802	TUBE (80/90-14M/C TR4)	1	1			INOUE
4	54P-F5326-00	PIN, PIVOT	1	1			
5	95702-10500	NUT, FLANGE	1	1			
6	93210-07802	O-RING	1	1			
7	5MX-F530K-00	BRAKE SHOE SET	1	1			
8	90506-12001	SPRING, TENSION	1	1			
9	90506-15001	SPRING, TENSION	1	1			
10	5MX-F5351-00	CAMSHAFT	1	1			
11	5LW-F5355-00	LEVER, CAMSHAFT	1	1			
12	5MX-F533A-00	PLATE, INDICATOR	1	1			
13	90206-14093	WASHER, WAVE	1	1			
14	90101-06046	BOLT	1	1			
15	90185-14814	NUT, SELF-LOCKING	1	1			
16	90201-14820	WASHER, PLATE	1	1			
17	90201-20276	WASHER, PLATE (T=1.0)	1	1			

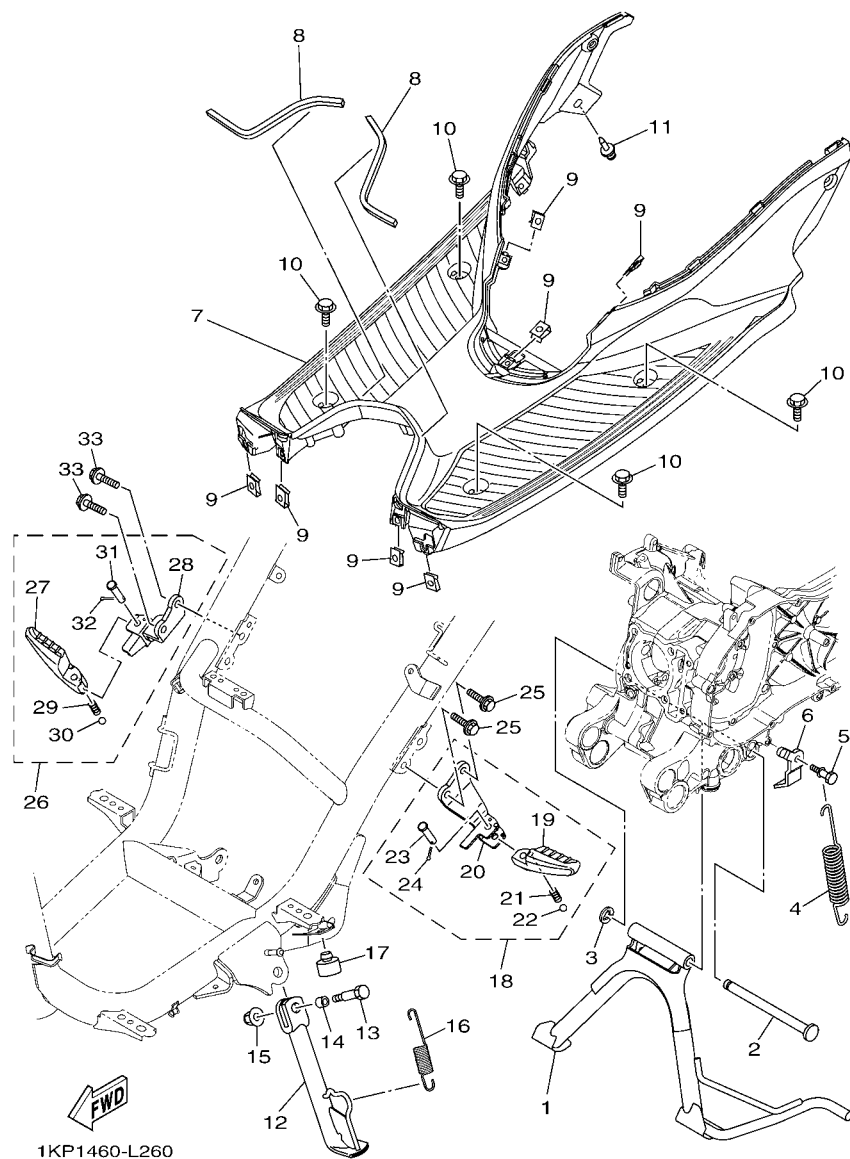


**FIG. 24 STEERING HANDLE & CABLE**

REF. NO.	PART NO.	DESCRIPTION	1KP2	1KPB		REMARKS
1	54P-F6110-00	HANDLE COMP.	1	1		
2	90105-10036	BOLT, FLANGE	1	1		
3	90185-10815	NUT, SELF-LOCKING	1	1		
4	1KP-F6143-00-P7	COVER, HANDLE UPPER 1	1	1		UR FOR SMX
	1KP-F6143-00-P1	COVER, HANDLE UPPER 1	1	1		UR FOR WM6
	1KP-F6143-00-P0	COVER, HANDLE UPPER 1	1	1		UR FOR RM7
	1KP-F6143-00-P8	COVER, HANDLE UPPER 1	1	1		UR FOR VPBC5
	1KP-F6143-00-P6	COVER, HANDLE UPPER 1	1	1		UR FOR DPRMD
5	90183-05807	NUT, SPRING	4	4		
6	97707-50016	SCREW, TRUSS HEAD TAPPING	6	6		
7	1KP-F6145-00	COVER, HAND UPPER 2	1	1		
8	90183-05807	NUT, SPRING	4	4		
9	97707-50016	SCREW, TRUSS HEAD TAPPING	4	4		
10	44D-F6240-00	GRIP ASSY	1	1		
11	44D-F6241-00	GRIP	1	1		
12	54P-F6246-00	END, GRIP	2	2		
13	2P2-F6280-11	REAR VIEW MIRROR ASSY (LEFT)	1	1		
14	2P2-F6290-11	REAR VIEW MIRROR ASSY (RIGHT)	1	1		
15	54P-F6301-10	THROTTLE CABLE ASSY	1	1		
16	92012-05016	BOLT, BUTTON HEAD	1	1		
17	92012-05010	BOLT, BUTTON HEAD	2	2		
18	54P-F6351-00	CABLE, BRAKE	1	1		
19	54P-F637G-00	HOLDER, WIRE	1	1		
20	54P-F7114-00	STOPPER, MAIN STAND	1	1		
21	95022-06040	BOLT, FLANGE	1	1		
22	95022-06014	BOLT, FLANGE	1	1		
23	90501-16003	SPRING, COMPRESSION	1	1		



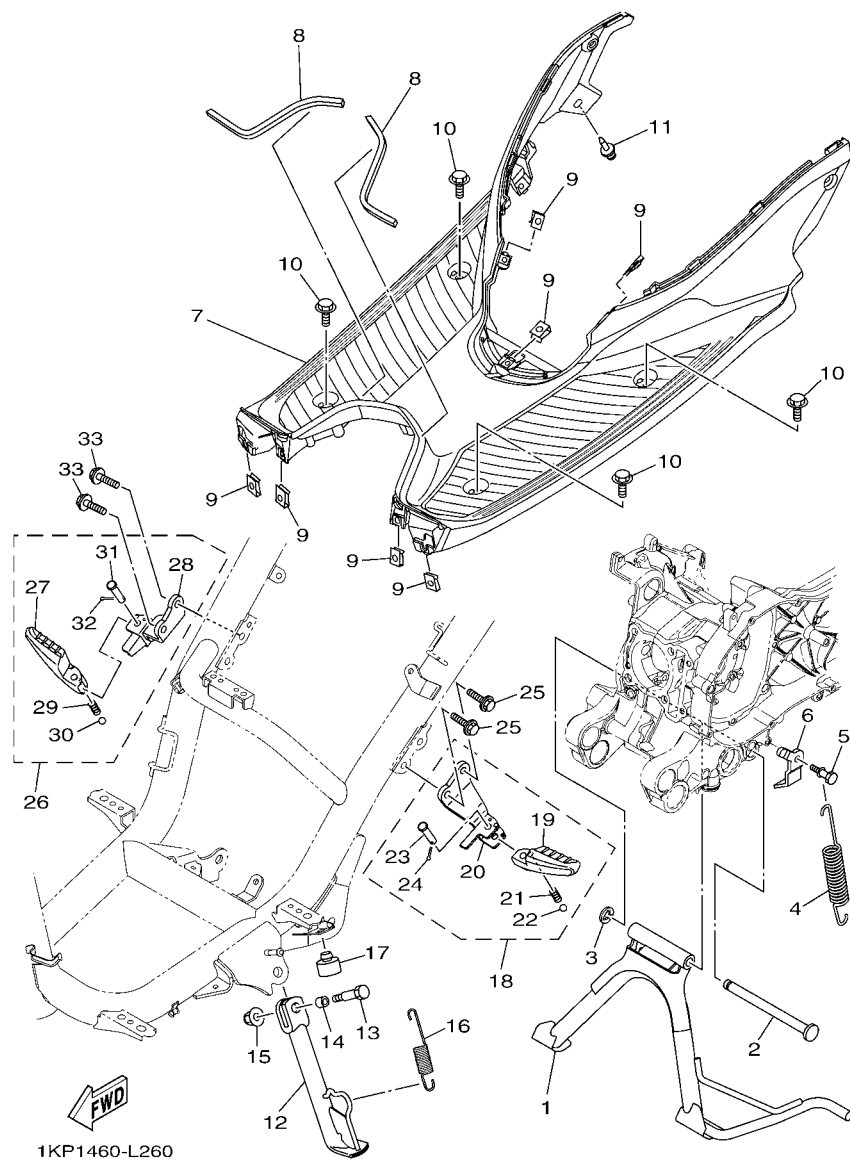




**FIG. 26 STAND & FOOTREST**

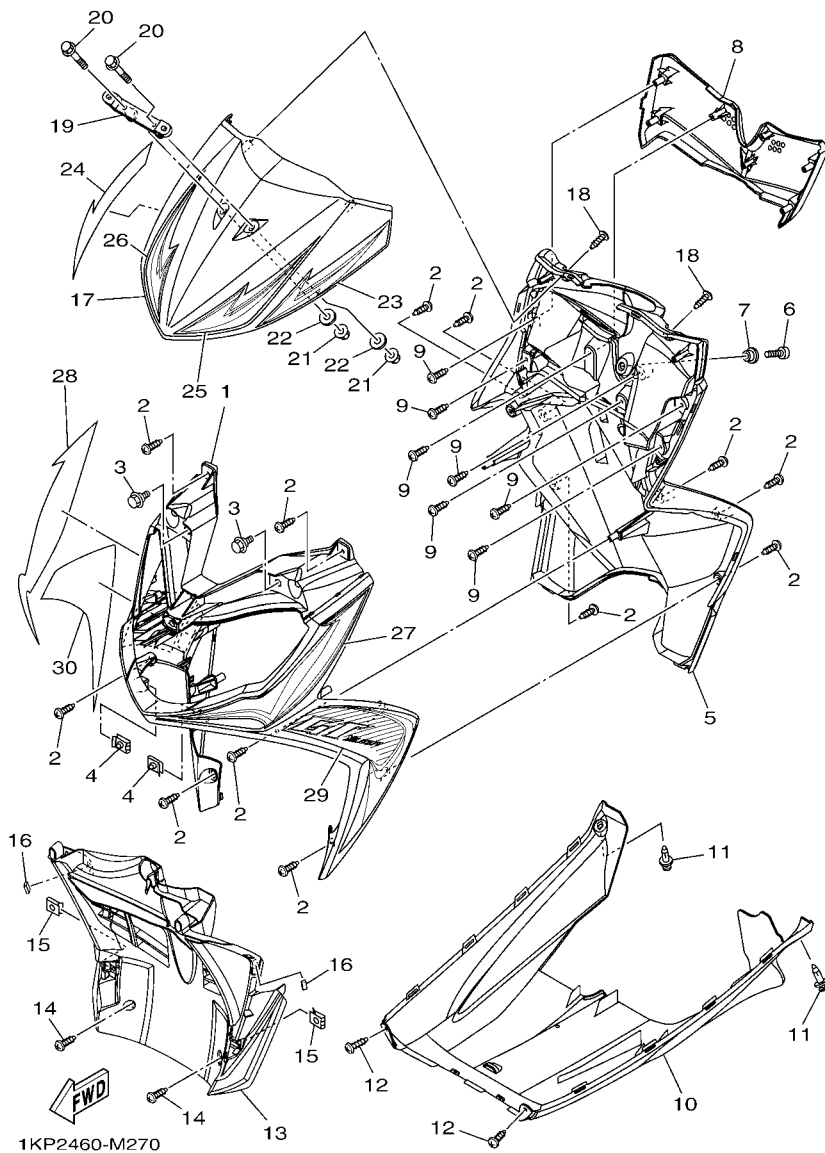
REF. NO.	PART NO.	DESCRIPTION	1KP2	1KPB		REMARKS
1	54P-F7111-00	STAND, MAIN	1	1		
2	54P-F7112-00	SHAFT, MAIN STAND	1	1		
3	99002-08600	CLIP	1	1		
4	90506-35821	SPRING, TENSION	1	1		
5	5LW-F7254-00	HOOK	1	1		
6	54P-F7267-00	GUIDE, WIRE	1	1		
7	1KP-F7481-00	BOARD, FOOTREST	1	1		
8	90520-08802	DAMPER, PLATE	2	2		
9	90183-05807	NUT, SPRING	7	7		
10	90119-06044	BOLT, WITH WASHER	4	4		
11	90269-06812	RIVET	1	1		
12	54P-F7311-00	STAND, SIDE	1	1		
13	90101-08847	BOLT	1	1		
14	90387-08820	COLLAR	1	1		
15	95602-08200	NUT, SELF-LOCKING	1	1		
16	90506-20514	SPRING, TENSION	1	1		
17	4YY-F7114-00	STOPPER, MAIN STAND	1	1		
18	54P-F7430-00	REAR FOOTREST ASSY 1	1	1		
19	54P-F7431-00	.FOOTREST, REAR 1	1	1		
20	54P-F7432-00	.BRACKET 1	1	1		
21	90501-12743	.SPRING, COMPRESSION	1	1		
22	93501-04843	.BALL	1	1		
23	91701-08035	.PIN	1	1		
24	91401-25015	.PIN, COTTER	1	1		
25	95802-08030	BOLT, FLANGE	2	2		
26	54P-F7440-00	REAR FOOTREST ASSY 2	1	1		
27	54P-F7441-00	.FOOTREST, REAR 2	1	1		





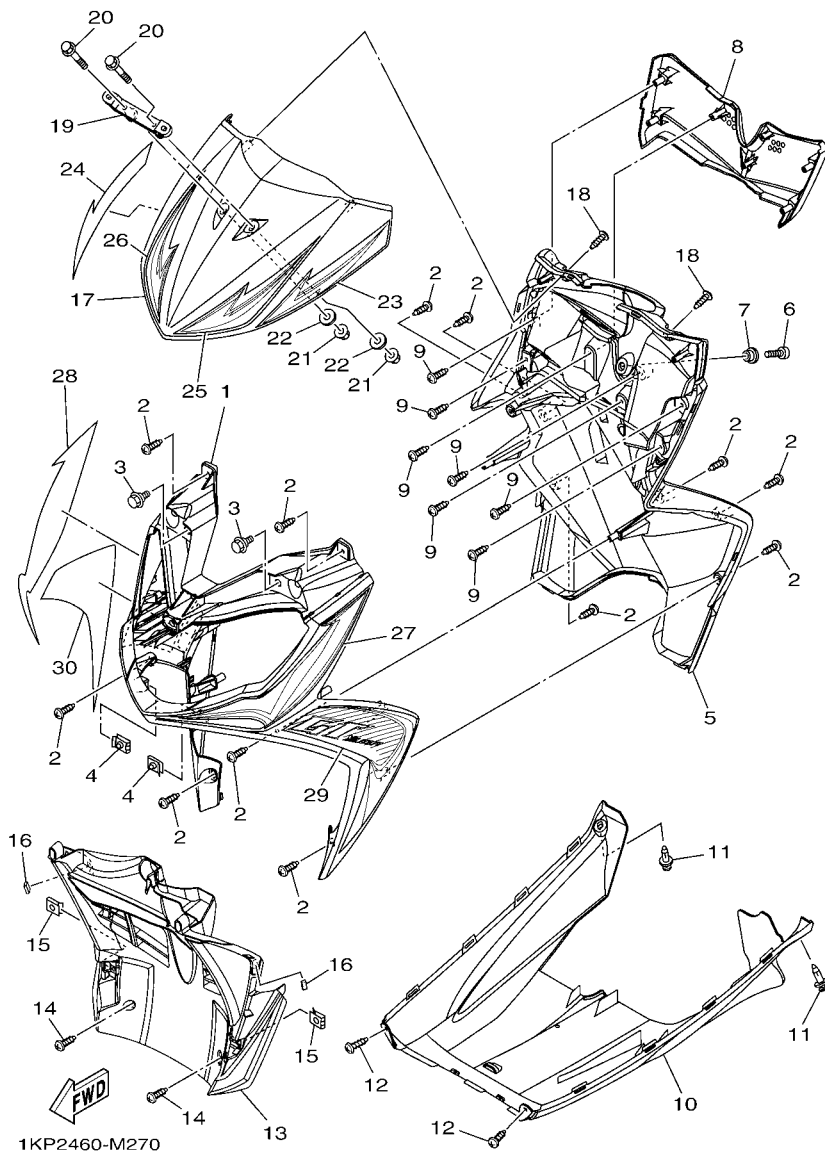
**FIG. 26 STAND & FOOTREST**

[illegible]



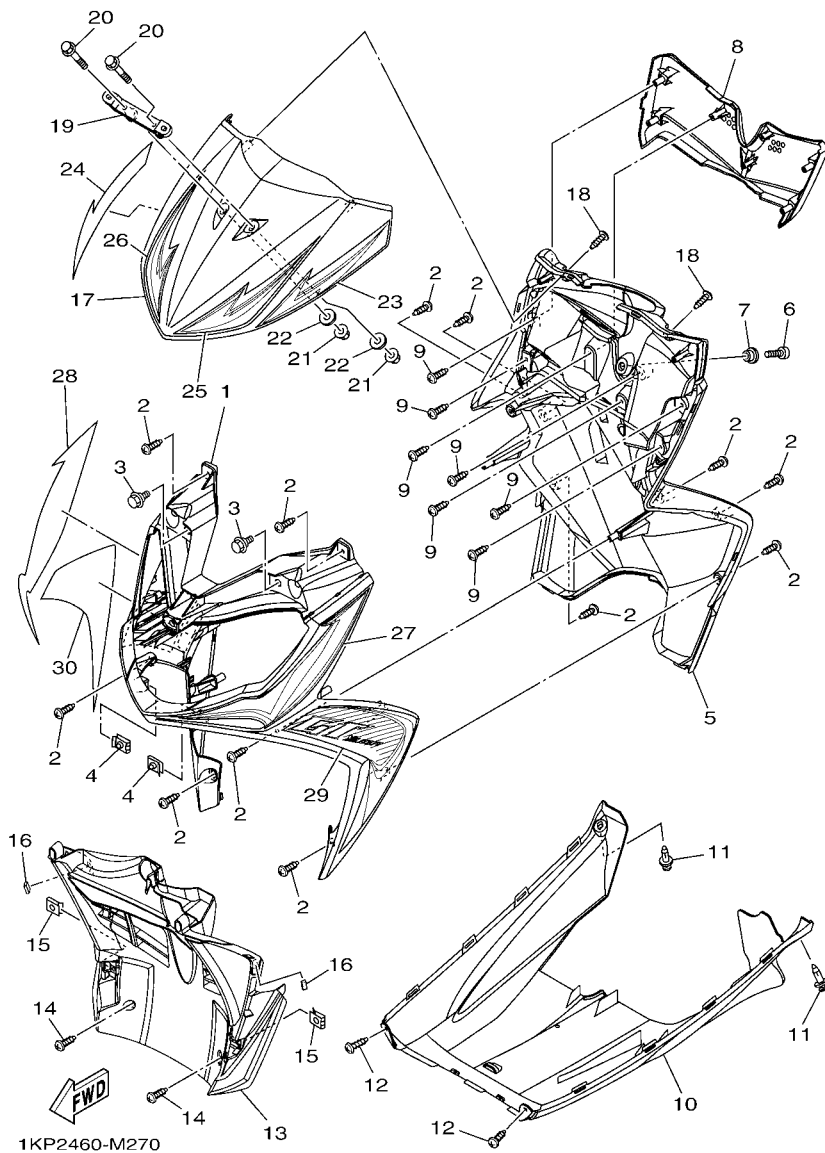
**FIG. 27 LEG SHIELD**

REF. NO.	PART NO.	DESCRIPTION	1KP2	1KPB		REMARKS
1	1KP-F8311-00-P7	LEG SHIELD 1	1			UR FOR SMX
	1KP-F8311-00-P1	LEG SHIELD 1	1			UR FOR WM6
	1KP-F8311-00-P0	LEG SHIELD 1	1			UR FOR RM7
	1KP-F8311-00-P8	LEG SHIELD 1	1			UR FOR VPBC5
	1KP-F8311-00-P6	LEG SHIELD 1	1			UR FOR DPRMD
---	1KP-F8311-10-P7	LEG SHIELD 1	---	1	---	UR FOR SMX
	1KP-F8311-10-P2	LEG SHIELD 1		1		UR FOR WM6
	1KP-F8311-10-P1	LEG SHIELD 1		1		UR FOR RM7
	1KP-F8311-10-P8	LEG SHIELD 1		1		UR FOR VPBC5
	1KP-F8311-10-P5	LEG SHIELD 1		1		UR FOR DPRMD
2	97707-50016	SCREW, TRUSS HEAD TAPPING	12	12		
3	90109-06202	BOLT	2	2		
4	90183-05807	NUT, SPRING	2	2		
5	1KP-F8312-00	LEG SHIELD 2	1	1		
6	98907-06012	SCREW, BIND	1	1		
7	90387-07811	COLLAR	1	1		
8	1KP-F836K-00	PANEL, INNER 1	1	1		
9	97707-50016	SCREW, TRUSS HEAD TAPPING	7	7		
10	1KP-F8385-00	COVER, UNDER	1	1		
11	90269-06812	RIVET	2	2		
12	97707-50016	SCREW, TRUSS HEAD TAPPING	2	2		
13	1KP-F1552-00	FENDER, INNER	1	1		
14	97707-50016	SCREW, TRUSS HEAD TAPPING	2	2		
15	90183-05807	NUT, SPRING	2	2		
16	90520-04809	DAMPER, PLATE	2	2		
17	1KP-F3391-00-P7	PANEL, FRONT	1			SMX(SMX)
	1KP-F3391-00-P0	PANEL, FRONT	1			RM7(WM6)



**FIG. 27 LEG SHIELD**

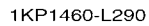
REF. NO.	PART NO.	DESCRIPTION	1KP2	1KPB		REMARKS
17	1KP-F3391-00-P1	PANEL, FRONT	1			WM6 (RM7,VPBC5,DPRMD)
	1KP-F3391-10-P7	PANEL, FRONT		1		SMX(SMX)
	1KP-F3391-10-P1	PANEL, FRONT		1		RM7(WM6)
	1KP-F3391-10-P2	PANEL, FRONT		1		WM6 (RM7,VPBC5,DPRMD)
18	97707-50016	SCREW, TRUSS HEAD TAPPING	2	2		
19	54P-H454E-00	BRACKET, NUMBER PLATE	1	1		
20	95802-06030	BOLT, FLANGE	2	2		
21	95702-06500	NUT, FLANGE	2	2		
22	90201-06088	WASHER, PLATE	2	2		
23	1KP-F33G1-00	GRAPHIC 1	1	1		UR FOR SMX
	1KP-F33G1-10	GRAPHIC 1	1	1		UR FOR WM6
	1KP-F33G1-20	GRAPHIC 1	1	1		UR FOR RM7
	1KP-F33G1-30	GRAPHIC 1	1	1		UR FOR VPBC5
	1KP-F33G1-40	GRAPHIC 1	1	1		UR FOR DPRMD
24	1KP-F33G2-00	GRAPHIC 2	1	1		UR FOR SMX
	1KP-F33G2-10	GRAPHIC 2	1	1		UR FOR WM6
	1KP-F33G2-20	GRAPHIC 2	1	1		UR FOR RM7
	1KP-F33G2-30	GRAPHIC 2	1	1		UR FOR VPBC5
	1KP-F33G2-40	GRAPHIC 2	1	1		UR FOR DPRMD
25	1KP-F33G3-00	GRAPHIC 3	1	1		UR FOR SMX
	1KP-F33G3-10	GRAPHIC 3	1	1		UR FOR WM6
	1KP-F33G3-20	GRAPHIC 3	1	1		UR FOR RM7
	1KP-F33G3-30	GRAPHIC 3	1	1		UR FOR VPBC5
	1KP-F33G3-40	GRAPHIC 3	1	1		UR FOR DPRMD
26	1KP-F33G4-00	GRAPHIC 4	1	1		UR FOR SMX
	1KP-F33G4-10	GRAPHIC 4	1	1		UR FOR WM6
	1KP-F33G4-20	GRAPHIC 4	1	1		UR FOR RM7



**FIG. 27 LEG SHIELD**

REF. NO.	PART NO.	DESCRIPTION	1KP2	1KPB		REMARKS
26	1KP-F33G4-30	GRAPHIC 4	1	1		UR FOR VPBC5
	1KP-F33G4-40	GRAPHIC 4	1	1		UR FOR DPRMD
27	1KP-F832D-00	GRAPHIC 17	1	1		UR FOR SMX
	1KP-F832D-10	GRAPHIC 17	1	1		UR FOR WM6
	1KP-F832D-20	GRAPHIC 17	1	1		UR FOR RM7
	1KP-F832D-30	GRAPHIC 17	1	1		UR FOR VPBC5
	1KP-F832D-40	GRAPHIC 17	1	1		UR FOR DPRMD
28	1KP-F832K-00	GRAPHIC, 12	1	1		UR FOR SMX
	1KP-F832K-10	GRAPHIC, 12	1	1		UR FOR WM6
	1KP-F832K-20	GRAPHIC, 12	1	1		UR FOR RM7
	1KP-F832K-30	GRAPHIC, 12	1	1		UR FOR VPBC5
	1KP-F832K-40	GRAPHIC, 12	1	1		UR FOR DPRMD
29	1KP-F832B-70	GRAPHIC, 15	1	1		UR FOR SMX
	1KP-F832B-80	GRAPHIC, 15	1	1		UR FOR WM6
	1KP-F832B-90	GRAPHIC, 15	1	1		UR FOR RM7
	1KP-F832B-A0	GRAPHIC, 15	1	1		UR FOR VPBC5
	1KP-F832B-B0	GRAPHIC, 15	1	1		UR FOR DPRMD
30	1KP-F832C-70	GRAPHIC, 16	1	1		UR FOR SMX
	1KP-F832C-80	GRAPHIC, 16	1	1		UR FOR WM6
	1KP-F832C-90	GRAPHIC, 16	1	1		UR FOR RM7
	1KP-F832C-A0	GRAPHIC, 16	1	1		UR FOR VPBC5
	1KP-F832C-B0	GRAPHIC, 16	1	1		UR FOR DPRMD



[illegible]

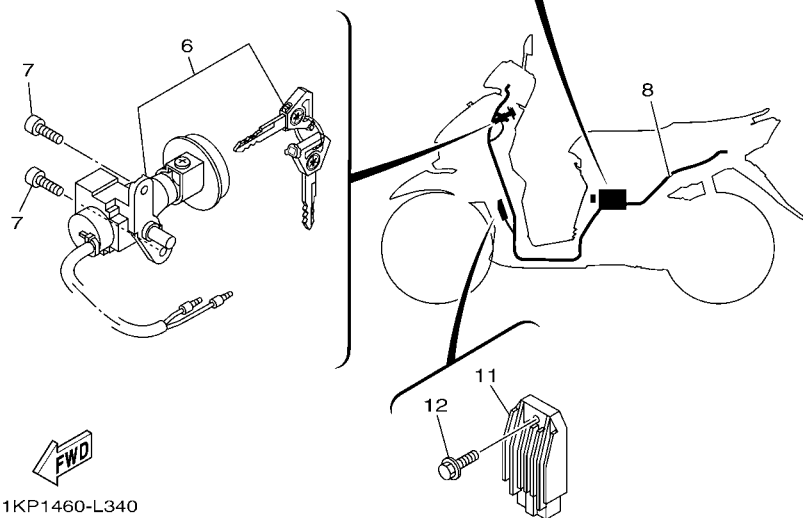


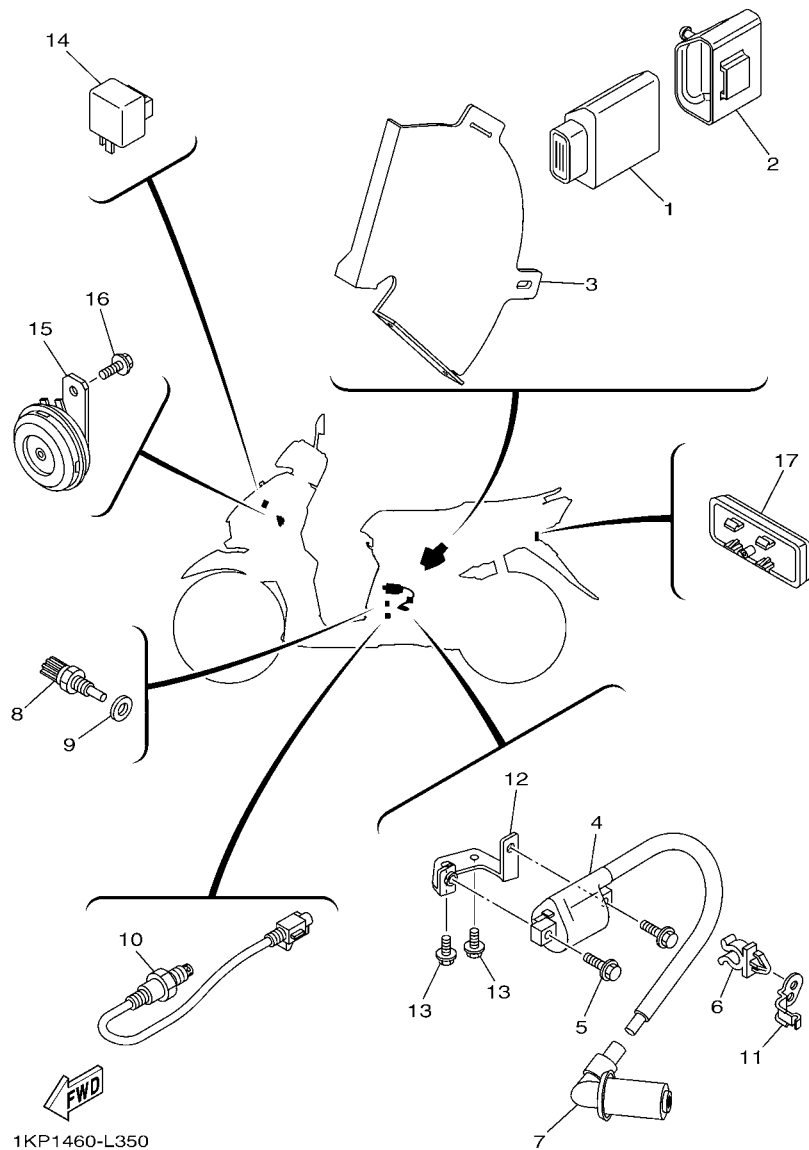








[illegible]



**FIG. 35 ELECTRICAL 2**

<b>REF. NO.</b>	<b>PART NO.</b>	<b>DESCRIPTION</b>	<b>1KP2</b>	<b>1KPB</b>			<b>REMARKS</b>
1	54P-H591A-01	ENGINE CONTROL UNIT ASSY	1	1			
2	54P-H5546-00	BAND	1	1			
3	1KP-H2599-00	COVER, CONNECTER	1	1			
4	54P-H2310-00	IGNITION COIL ASSY	1	1			
5	95022-06020	BOLT, FLANGE	2	2			
6	90464-14808	CLAMP	1	1			
7	54P-H2370-00	PLUG CAP ASSY	1	1			
8	54P-H3591-00	THERMO UNIT	1	1			
9	90430-10804	GASKET	1	1			
10	54P-H592A-00	SENSOR, OXYGEN	1	1			
11	54P-H1328-00	CLAMP	1	1			
12	1KP-H2316-00	BRACKET, IGNITION COIL	1	1			
13	95022-06010	BOLT, FLANGE	2	2			
14	5D9-H3350-00	FLASHER RELAY ASSY	1	1			
15	54P-H3371-00	HORN	1	1			
16	95802-06010	BOLT, FLANGE	1	1			
17	54P-H5130-00	REAR REFLECTOR ASSY	1	1			

NUMERICAL INDEX

PART NO.	REF. NO.	PART NO.	REF. NO.	PART NO.	REF. NO.	PART NO.	REF. NO.	PART NO.	REF. NO.	PART NO.	REF. NO.
5LW-15659-01	10 - 6	44D-E2233-00	4 - 8	54P-E4610-00	8 - 1	54P-E7465-00	12 - 16	1KP-F1711-00-P9	16 - 14	1KP-F1741-00-P0	16 - 28
5TL-2341E-00	18 - 25	54P-E2241-00	4 - 10	14D-E4613-00	8 - 5	54P-E7465-10	12 - 17	1KP-F1711-10-P1	16 - 14	1KP-F1741-10-P0	16 - 28
5TL-2341E-10	18 - 28	54P-E2611-00	6 - 13	54P-E4718-00	8 - 2	54P-E7471-00	12 - 2	1KP-F1711-10-P2	16 - 14	1KP-F1746-00	16 - 3
36Y-2589H-00	25 - 8	54P-E262H-00	6 - 4	54P-E5113-00	9 - 20	54P-E7611-00	12 - 12	1KP-F1711-10-P5	16 - 14	1KP-F174G-70	16 - 37
1Y7-83517-00	30 - 5	54P-E2651-00	6 - 1	54P-E5150-00	9 - 1	54P-E7620-00	12 - 7	1KP-F1711-10-P7	16 - 14	1KP-F174G-80	16 - 37
54P-E1102-00	1 - 1	54P-E2652-00	6 - 3	54P-E5150-10	9 - 1	54P-E7623-00	12 - 9	1KP-F1711-10-P8	16 - 14	1KP-F174G-90	16 - 37
54P-E111F-00	4 - 3	54P-E2658-00	6 - 2	54P-E5191-00	10 - 7	54P-E7632-00	12 - 8	1KP-F171E-00-P0	16 - 31	1KP-F174G-A0	16 - 37
54P-E111J-00	1 - 7	54P-E2659-00	6 - 9	54P-E5316-00	10 - 11	54P-E7641-00	12 - 26	1KP-F171E-00-P1	16 - 31	1KP-F174G-B0	16 - 37
54P-E1133-10	1 - 2	44D-E2662-00	3 - 11	54P-E5351-00	5 - 4	44D-E7645-00	12 - 27	1KP-F171E-00-P6	16 - 31	1KP-F174H-70	16 - 38
54P-E1162-00	1 - 22	54P-E2668-00	6 - 10	54P-E5362-00	9 - 21	54P-E7649-00	12 - 33	1KP-F171E-00-P7	16 - 31	1KP-F174H-80	16 - 38
54P-E1165-00	1 - 9	54P-E2684-00	6 - 5	5LW-E5363-00	9 - 18	54P-E7653-00	12 - 10	1KP-F171E-00-P8	16 - 31	1KP-F174H-90	16 - 38
54P-E1166-00	7 - 39	1KP-E3300-00	5 - 1	54P-E5371-00	9 - 7	54P-E7660-00	12 - 14	1KP-F171E-10-P1	16 - 31	1KP-F174H-A0	16 - 38
54P-E1169-00	1 - 10	5TL-E3324-00	2 - 8		10 - 3	5TL-E7664-00	12 - 18	1KP-F171E-10-P2	16 - 31	1KP-F174H-B0	16 - 38
54P-E1173-00	1 - 13	54P-E3411-00	5 - 5	54P-E5373-00	9 - 8	44D-E7668-00	12 - 21	1KP-F171E-10-P5	16 - 31	1KP-F174J-00	16 - 39
54P-E1181-00	1 - 17	5LW-E3452-00	2 - 6	54P-E5383-00	10 - 9	54P-E7670-00	12 - 15	1KP-F171E-10-P7	16 - 31	1KP-F174J-10	16 - 39
54P-E1191-00	1 - 8	54P-E3474-00	7 - 16	54P-E5407-00	10 - 22	54P-E7674-00	12 - 11	1KP-F171E-10-P8	16 - 31	1KP-F174J-30	16 - 39
54P-E1193-00	1 - 14	5LW-E3475-00	5 - 2	14D-E5408-00	9 - 9	54P-E7678-00	12 - 22	1KP-F171L-00-P0	16 - 6	1KP-F174K-00	16 - 40
4YS-E1198-00	9 - 15	54P-E3556-00	7 - 3	54P-E5408-00	10 - 17	54P-E7678-10	12 - 24	1KP-F171L-00-P1	16 - 6	1KP-F174K-10	16 - 40
54P-E1311-00	1 - 21	54P-E3557-00	7 - 14	54P-E5411-00	10 - 1	54P-E7683-00	12 - 19	1KP-F171L-00-P2	16 - 6	1KP-F174K-30	16 - 40
54P-E1311-10	1 - 21	5LW-E3569-00	6 - 16	54P-E5413-00	10 - 25	54P-E7684-00	12 - 20	1KP-F171M-00-P0	16 - 10	1KP-F17A1-00	16 - 43
54P-E1351-00	1 - 23	54P-E3575-00	7 - 37	54P-E5417-00	9 - 23	1KP-F1110-00	14 - 1	1KP-F171M-00-P1	16 - 10	1KP-F17A1-10	16 - 43
1KP-E1400-00	2 - 1	54P-E3585-00	7 - 1	54P-E5421-00	9 - 36	1KP-F1110-10	14 - 1	1KP-F171M-00-P2	16 - 10	1KP-F17A1-20	16 - 43
1KP-E1400-10	2 - 1	54P-E3593-00	7 - 5	54P-E5423-00	9 - 30	54P-F1161-00	18 - 35	1KP-F1721-00-P0	16 - 19	1KP-F17A1-30	16 - 43
1KP-E1422-00	2 - 5	54P-E3595-00	7 - 2	54P-E5451-00	10 - 2	54P-F1268-00	14 - 2	1KP-F1721-00-P1	16 - 19	1KP-F17A1-40	16 - 43
54P-E1445-00	2 - 14	54P-E3750-01	7 - 17	54P-E5453-00	9 - 26	54P-F1410-00	14 - 4	1KP-F1721-00-P6	16 - 19	1KP-F17A2-00	16 - 44
54P-E1445-10	2 - 14	54P-E3761-00	7 - 9	54P-E5461-00	9 - 37	54P-F1459-00	14 - 11	1KP-F1721-00-P7	16 - 19	1KP-F17A2-10	16 - 44
54P-E1603-00	2 - 13	5LW-E3769-00	9 - 22	54P-E5471-00	10 - 18	1KP-F1511-00-P0	15 - 1	1KP-F1721-00-P8	16 - 19	1KP-F17A2-20	16 - 44
54P-E1631-00	2 - 10	54P-E3770-00	7 - 8	54P-E5472-00	10 - 20	1KP-F1511-00-P1	15 - 1	1KP-F1721-10-P1	16 - 19	1KP-F17A2-30	16 - 44
54P-E1633-00	2 - 11	54P-E3815-00	7 - 20	54P-E5473-00	10 - 16	1KP-F1511-00-P6	15 - 1	1KP-F1721-10-P2	16 - 19	1KP-F17A2-40	16 - 44
5D9-E1651-00	2 - 4	54P-E3892-00	7 - 18	54P-E5495-00	10 - 21	1KP-F1511-00-P7	15 - 1	1KP-F1721-10-P5	16 - 19	54P-F2141-00	14 - 13
5MX-E1681-10	2 - 2	54P-E3895-00	7 - 19	54P-E5512-00	11 - 6	1KP-F1511-00-P8	15 - 1	1KP-F1721-10-P7	16 - 19	54P-F2210-00	17 - 1
54P-E2111-00	3 - 1	54P-E3907-10	19 - 6	44D-E5521-00	11 - 7	1KP-F1552-00	27 - 13	1KP-F1721-10-P8	16 - 19	5MX-F2216-00	9 - 5
54P-E2113-00	3 - 4	54P-E3915-00	19 - 7	54P-E5524-00	11 - 1	1KP-F1569-00	15 - 3	1KP-F172W-00	16 - 1	54P-F3100-10	18 - 1
1KP-E2117-00	3 - 6	54P-E3938-00	7 - 12	1KP-E5570-00	11 - 4	1KP-F1569-10	15 - 3	1KP-F1731-00-P0	16 - 25	54P-F3110-10	18 - 8
5TL-E2118-00	3 - 5	54P-E3971-00	19 - 3	44D-E5598-00	11 - 5	1KP-F1569-20	15 - 3	1KP-F1731-10-P0	16 - 25	1FC-F3111-10	18 - 19
54P-E2119-00	3 - 3	54P-E4137-00	7 - 13	5TL-E5601-10	11 - 8	1KP-F1569-30	15 - 3	1KP-F1735-00	14 - 3	54P-F3126-10	18 - 5
54P-E2121-00	3 - 2	54P-E4146-00	7 - 23	1KP-E5620-00	11 - 14	1KP-F1569-40	15 - 3	1KP-F173E-70	16 - 35	54P-F3136-10	18 - 2
5P0-E2126-00	3 - 7	54P-E4147-00	7 - 10	4VP-E5630-00	11 - 16	1KP-F1579-00	15 - 4	1KP-F173E-80	16 - 35	54P-F3141-10	18 - 15
54P-E2146-00	3 - 12	5CA-E4147-00	7 - 11	5MX-E5657-00	12 - 30	1KP-F1579-10	15 - 4	1KP-F173E-90	16 - 35	5LM-F3144-00	18 - 14
54P-E2151-00	3 - 8	54P-E4411-00	7 - 24	5MX-E5673-00	11 - 17	1KP-F1579-20	15 - 4	1KP-F173E-A0	16 - 35	3AY-F3145-00	18 - 3
54P-E2151-10	3 - 8	54P-E4412-00	7 - 25	44D-E5744-00	12 - 23	1KP-F1579-30	15 - 4	1KP-F173E-B0	16 - 35		18 - 6
33S-E2159-00	3 - 10	54P-E442F-00	7 - 42	54P-E6111-00	12 - 1	1KP-F1579-40	15 - 4	1KP-F173F-70	16 - 36	2JG-F3147-00	18 - 20
54P-E2170-00	4 - 1	54P-E4437-00	7 - 26	54P-E6611-00	12 - 25	1KP-F1611-00	15 - 5	1KP-F173F-80	16 - 36	5D9-F3152-00	18 - 11
44D-E2176-00	4 - 5	28D-E443E-00	7 - 33	54P-E6620-00	12 - 13	1KP-F1621-00	15 - 7	1KP-F173F-90	16 - 36	5P0-F3153-00	18 - 23
5MX-E2210-10	4 - 11	4ST-E443E-00	10 - 4	54P-E7155-00	13 - 8	1KP-F1711-00-P0	16 - 14	1KP-F173F-A0	16 - 36	5P0-F3156-00	18 - 4
54P-E2213-00	4 - 12	5TP-E443G-00	7 - 30	54P-E7211-00	13 - 5	1KP-F1711-00-P1	16 - 14	1KP-F173F-B0	16 - 36		18 - 7
54P-E2228-00	4 - 14	54P-E4452-00	7 - 29	54P-E7410-00	13 - 1	1KP-F1711-00-P6	16 - 14	1KP-F173X-00	16 - 41	2JG-F3157-00	18 - 10
54P-E2231-00	4 - 7	54P-E4453-00	7 - 28	54P-E7421-00	13 - 4	1KP-F1711-00-P7	16 - 14	1KP-F173Y-00	16 - 42	2BU-F3158-00	18 - 12

NUMERICAL INDEX

PART NO.	REF. NO.	PART NO.	REF. NO.	PART NO.	REF. NO.	PART NO.	REF. NO.	PART NO.	REF. NO.	PART NO.	REF. NO.
4D0-F3165-00	18 - 22	1KP-F4704-00	20 - 5	1KP-F6143-00-P8	24 - 4	1KP-F832C-A0	27 - 30	1KP-H3510-00	30 - 1	90109-06202	27 - 3
28D-F3170-00	18 - 9	1KP-F470F-00	20 - 2	1KP-F6145-00	24 - 7	1KP-F832C-B0	27 - 30	1KP-H3511-00	30 - 2	90109-06255	33 - 20
278-F3181-50	18 - 13	54P-F4726-00	20 - 11	44D-F6240-00	24 - 10	1KP-F832D-00	27 - 27	2P0-H3516-00	31 - 4	90109-06798	33 - 12
54P-F3340-10	18 - 16	5TL-F4727-00	20 - 10	44D-F6241-00	24 - 11	1KP-F832D-10	27 - 27	54P-H3550-10	30 - 8	90110-06862	1 - 20
4D0-F3346-00	18 - 18	1KP-F4730-00	20 - 1	54P-F6246-00	24 - 12	1KP-F832D-20	27 - 27	1KP-H3572-00	30 - 3	90111-06811	8 - 3
54P-F334G-00	18 - 21	3C1-F4741-00	20 - 4	2P2-F6280-11	24 - 13	1KP-F832D-30	27 - 27	54P-H3591-00	35 - 8	90111-08815	22 - 2
1KP-F3391-00-P0	27 - 17	5D9-F4741-00	20 - 3	44D-F6281-00	24 - 26	1KP-F832D-40	27 - 27	1LB-H3912-00	33 - 7	90116-08843	9 - 13
1KP-F3391-00-P1	27 - 17	1S7-F4768-00	20 - 15	44D-F6282-00	24 - 27	1KP-F832K-00	27 - 28	5TL-H3922-00	33 - 19	90119-06044	19 - 2
1KP-F3391-00-P7	27 - 17	1KP-F476U-00	20 - 25	2P2-F6290-11	24 - 14	1KP-F832K-10	27 - 28	1LB-H3935-00	33 - 8		26 - 10
1KP-F3391-10-P1	27 - 17	1KP-F4773-00-P0	20 - 19	54P-F6301-10	24 - 15	1KP-F832K-20	27 - 28	5TL-H3955-20	33 - 2	90149-05801	1 - 11
1KP-F3391-10-P2	27 - 17	1KP-F4773-00-P1	20 - 19	54P-F6351-00	24 - 18	1KP-F832K-30	27 - 28	40D-H3962-00	33 - 10	90149-10804	22 - 15
1KP-F3391-10-P7	27 - 17	1KP-F4773-00-P7	20 - 19	54P-F637G-00	24 - 19	1KP-F832K-40	27 - 28	1LB-H3967-00	33 - 9	90151-06811	10 - 10
1KP-F33G1-00	27 - 23	40D-F4780-01	20 - 13	54P-F7111-00	26 - 1	1KP-F8356-00	14 - 15	40D-H396G-00	33 - 11	90159-03102	30 - 6
1KP-F33G1-10	27 - 23	1KP-F478E-00	20 - 16	54P-F7112-00	26 - 2	1KP-F836K-00	27 - 8	1KP-H3973-00	33 - 1	90159-06810	16 - 32
1KP-F33G1-20	27 - 23	54P-F5168-00-1X	21 - 1	44D-F7114-00	14 - 7	5LM-F8371-00	32 - 7	1KP-H3976-00	33 - 5	90163-05803	7 - 32
1KP-F33G1-30	27 - 23	3AY-F5181-01	21 - 8	4YY-F7114-00	26 - 17	1UB-F8372-00	16 - 33	1LB-H3980-00	33 - 14	90170-05803	3 - 9
1KP-F33G1-40	27 - 23	54P-F518A-00	22 - 3	54P-F7114-00	24 - 20	1KP-F8385-00	27 - 10	54P-H3980-00	33 - 22	90170-12800	12 - 32
1KP-F33G2-00	27 - 24	5TL-F5190-01	21 - 11	54P-F7121-00	9 - 4	54P-H1328-00	35 - 11	2B5-H411V-00	31 - 6	90175-06013	24 - 24
1KP-F33G2-10	27 - 24	5MX-F530K-00	23 - 7	5LW-F7254-00	26 - 5	54P-H132G-00	28 - 5	1KP-H4127-00	31 - 9	90179-08518	1 - 15
1KP-F33G2-20	27 - 24	54P-F5326-00	23 - 4	54P-F7267-00	26 - 6	54P-H1410-00	28 - 2	1KP-H4192-00	31 - 8	90179-10803	12 - 35
1KP-F33G2-30	27 - 24	54P-F5338-00-1X	23 - 1	54P-F7311-00	26 - 12	54P-H1450-00	28 - 1	1KP-H4300-00	31 - 1	90179-12004	28 - 7
1KP-F33G2-40	27 - 24	5MX-F533A-00	23 - 12	54P-F7430-00	26 - 18	1KP-H1617-00	29 - 3	1KP-H430A-00	31 - 7	90179-25002	18 - 30
1KP-F33G3-00	27 - 25	5MX-F5351-00	23 - 10	54P-F7431-00	26 - 19	1KP-H1828-00	29 - 5	1KP-H4312-00	31 - 5	90183-05807	16 - 9
1KP-F33G3-10	27 - 25	5LW-F5355-00	23 - 11	54P-F7432-00	26 - 20	1KP-H1830-00	29 - 4	5HV-H4314-00	31 - 2		16 - 13
1KP-F33G3-20	27 - 25	5P0-F5802-00	22 - 5	54P-F7440-00	26 - 26	1KP-H1847-00	29 - 2	54P-H454E-00	27 - 19		16 - 18
1KP-F33G3-30	27 - 25	5YP-F5803-50	22 - 6	54P-F7441-00	26 - 27	1KP-H1890-00	29 - 1	1KP-H4710-00	32 - 1		16 - 24
1KP-F33G3-40	27 - 25	3C1-F5805-10	22 - 10	54P-F7442-00	26 - 28	5TP-H1940-00	34 - 13	4AC-H4714-00	32 - 2		16 - 27
1KP-F33G4-00	27 - 26	54P-F580U-00	22 - 4	1KP-F7481-00	26 - 7	54P-H1960-00	34 - 11	1KP-H4735-00	32 - 4		16 - 30
1KP-F33G4-10	27 - 26	1KP-F582U-00	22 - 1	54P-F8100-00	20 - 26	14D-H2100-00	34 - 1	54P-H5130-00	35 - 17		20 - 7
1KP-F33G4-20	27 - 26	5P0-F583T-03	25 - 4	1KP-F8311-00-P0	27 - 1	14D-H2100-10	34 - 1	54P-H5546-00	35 - 2		24 - 5
1KP-F33G4-30	27 - 26	5P0-F5852-00	25 - 7	1KP-F8311-00-P1	27 - 1	54P-H2115-00	34 - 2	54P-H591A-01	35 - 1		24 - 8
1KP-F33G4-40	27 - 26	5P0-F5854-00	25 - 6	1KP-F8311-00-P6	27 - 1	54P-H2116-00	34 - 5	54P-H592A-00	35 - 10		26 - 9
54P-F3411-00	18 - 27	5P0-F5855-00	25 - 10	1KP-F8311-00-P7	27 - 1	54P-H2129-00	20 - 8	5P0-W0041-00	25 - 5		27 - 4
4FP-F3411-10	18 - 17	5TL-F5867-01	25 - 9	1KP-F8311-00-P8	27 - 1	54P-H2151-00	34 - 3	4C9-W0048-00	22 - 9		27 - 15
28D-F3412-00	18 - 24	1KP-F5872-00	25 - 1	1KP-F8311-10-P1	27 - 1	1KP-H2176-00	20 - 22	54P-WE445-00	7 - 27		32 - 6
54P-F3412-00	18 - 26	1KP-F5875-00	18 - 31	1KP-F8311-10-P2	27 - 1	54P-H2310-00	35 - 4	90101-06046	23 - 14	90185-10811	21 - 9
5TL-F3416-00	18 - 29	28D-F5876-00	18 - 33	1KP-F8311-10-P5	27 - 1	1KP-H2316-00	35 - 12	90101-08847	26 - 13	90185-10815	24 - 3
54P-F4110-00	19 - 1	5YP-F5917-00	22 - 7	1KP-F8311-10-P7	27 - 1	54P-H2370-00	35 - 7	90105-068A0	34 - 12	90185-14814	23 - 15
54P-F4110-10	19 - 1	5P0-F5919-00	22 - 12	1KP-F8311-10-P8	27 - 1	1KP-H252E-00	34 - 6	90105-068A5	7 - 6	90201-05817	8 - 4
1KP-F414A-00	19 - 11	5YP-F5924-00	22 - 13	1KP-F8312-00	27 - 5	1LB-H2556-00	33 - 15	90105-068A6	7 - 7	90201-06088	27 - 22
1KP-F414A-01	19 - 11	5YP-F5925-01	22 - 11	1KP-F832B-70	27 - 29	1KP-H2590-10	34 - 8	90105-08861	17 - 2	90201-10065	17 - 5
54P-F414G-00	19 - 8	5YP-F5937-00	22 - 8	1KP-F832B-80	27 - 29	1KP-H2599-00	35 - 3	90105-088E1	4 - 4	90201-10118	25 - 3
54P-F419F-00	19 - 4	5YP-F5939-00	22 - 14	1KP-F832B-90	27 - 29	1LB-H2911-00	33 - 6	90105-088E3	14 - 9	90201-10831	21 - 10
54P-F4491-00	19 - 9	54P-F6110-00	24 - 1	1KP-F832B-A0	27 - 29	5HV-H3311-00	31 - 3	90105-10036	24 - 2	90201-12028	17 - 4
4YY-F4610-00	19 - 12	1KP-F6143-00-P0	24 - 4	1KP-F832B-B0	27 - 29		32 - 3	90105-10283	14 - 5	90201-12688	28 - 6
4YY-F4610-10	19 - 12	1KP-F6143-00-P1	24 - 4	1KP-F832C-70	27 - 30	5D9-H3350-00	35 - 14	90109-06202	15 - 2	90201-14820	23 - 16
4YY-F4612-00	19 - 13	1KP-F6143-00-P6	24 - 4	1KP-F832C-80	27 - 30	54P-H3371-00	35 - 15		15 - 6	90201-154E8	11 - 11
4YY-F4612-10	19 - 13	1KP-F6143-00-P7	24 - 4	1KP-F832C-90	27 - 30	1KP-H3509-00	30 - 4		20 - 6	90201-15841	12 - 29

NUMERICAL INDEX

PART NO.	REF. NO.	PART NO.	REF. NO.	PART NO.	REF. NO.	PART NO.	REF. NO.	PART NO.	REF. NO.	PART NO.	REF. NO.
90201-20276	23 - 17	90520-02819	16 - 34	93210-30611	7 - 4	95022-06070	9 - 28	97707-50016	27 - 9		
90206-14093	23 - 13	90520-03806	20 - 21	93210-94800	6 - 14	95022-06080	10 - 15		27 - 12		
90208-12808	12 - 31	90520-03808	20 - 24	93211-07800	9 - 25	95022-08012	9 - 2		27 - 14		
90249-12008	24 - 25	90520-03809	20 - 23	93211-37803	9 - 32	95302-10600	17 - 3		27 - 18		
90269-06812	16 - 17	90520-04809	27 - 16	93306-002YW	4 - 2	95602-06100	33 - 13		30 - 7		
	16 - 23	90520-05810	6 - 8	93306-006Y7	12 - 36		33 - 21		31 - 11		
	26 - 11	90520-05812	16 - 20	93306-054X9	13 - 6	95602-08200	14 - 10		33 - 4		
	27 - 11	90520-06804	31 - 10	93306-253Y9	12 - 5		26 - 15	97707-50020	6 - 6		
90280-03017	2 - 9	90520-08802	26 - 8		13 - 9	95602-10200	14 - 6	98502-05010	33 - 16		
90340-12808	9 - 14	90520-08804	16 - 2	93306-300YK	21 - 4		14 - 14	98502-05020	5 - 3		
90380-15811	11 - 10		16 - 11	93306-301XT	13 - 2	95612-08618	1 - 6	98502-05025	24 - 28		
90387-05820	16 - 15	90520-10811	10 - 19		13 - 3	95702-06500	20 - 12	98502-06016	28 - 4		
	16 - 21	90520-15806	10 - 26	93306-372X2	2 - 7		27 - 21	98507-05010	20 - 18		
90387-064W3	7 - 35	90560-10292	21 - 2	93306-372Y5	2 - 7	95702-08500	8 - 6	98902-05008	34 - 4		
90387-067V1	6 - 7	91312-05010	19 - 10	93306-804Y3	11 - 2	95702-10500	23 - 5	98907-06012	27 - 6		
90387-06891	7 - 34	91312-06010	12 - 3	93306-804Y4	11 - 2	95802-06010	14 - 16	99002-08600	26 - 3		
90387-07811	27 - 7	91312-06012	4 - 9	93306-804Y6	11 - 2		18 - 32	99009-15400	11 - 12		
90387-08820	26 - 14	91312-06014	34 - 7	93310-528Y8	2 - 3		18 - 34	99009-17400	12 - 4		
90387-08821	14 - 8	91312-06020	28 - 3	93440-10085	1 - 3		18 - 36	99480-05010	9 - 27		
90387-10837	21 - 7		29 - 6	93450-14088	2 - 12		20 - 17				
90388-10800	14 - 12		33 - 17	93450-32837	11 - 3		35 - 16				
90388-10805	9 - 6	91312-06025	11 - 15	93501-04843	26 - 22	95802-06030	27 - 20				
90401-10812	25 - 2		25 - 11		26 - 30	95802-08030	26 - 25				
90430-06014	1 - 5	91401-25015	26 - 24	94107-14802	21 - 5		26 - 33				
90430-08119	9 - 3		26 - 32	94108-14802	23 - 2	95812-06025	7 - 15				
	9 - 17	91701-08035	26 - 23	94207-14802	21 - 6		7 - 38				
90430-10804	35 - 9		26 - 31	94208-14802	23 - 3	95812-06030	1 - 12				
90464-12810	34 - 10	91810-14809	1 - 18	94568-F9090	4 - 6	95812-08016	9 - 16				
90464-14808	35 - 6		1 - 19	94700-00880	1 - 16	95812-08045	8 - 7				
90464-16801	33 - 18		9 - 10	94700-00895	1 - 16	95822-06016	6 - 15				
90467-110A3	10 - 5		9 - 33	95022-06010	1 - 4	95822-06020	10 - 24				
90467-12807	7 - 31		9 - 38		10 - 8		20 - 20				
90467-13858	7 - 40		10 - 12		19 - 5	95822-06090	10 - 23				
	7 - 41	92012-05010	24 - 17		20 - 14	97602-05216	33 - 3				
90467-15804	7 - 21	92012-05016	24 - 16		35 - 13	97602-06220	6 - 11				
	7 - 22	92902-10200	22 - 16	95022-06012	34 - 9	97702-40616	32 - 5				
90480-13013	7 - 36	93102-15801	11 - 13	95022-06014	24 - 22	97702-60530	6 - 12				
90501-12743	26 - 21	93102-17803	12 - 6	95022-06016	9 - 29	97707-50012	16 - 26				
	26 - 29	93102-19817	9 - 24	95022-06020	4 - 13		16 - 29				
90501-16003	24 - 23	93102-25819	9 - 31		35 - 5		20 - 9				
90501-16004	5 - 6	93102-26811	13 - 7	95022-06025	9 - 34	97707-50016	16 - 5				
90506-12001	23 - 8	93106-20816	21 - 3	95022-06035	9 - 35		16 - 8				
90506-15001	23 - 9	93210-07802	23 - 6		9 - 39		16 - 12				
90506-20514	26 - 16	93210-148H8	9 - 19		10 - 13		16 - 16				
90506-35821	26 - 4	93210-16805	12 - 28	95022-06040	24 - 21		16 - 22				
90508-32768	11 - 9	93210-258G2	12 - 34	95022-06045	10 - 14		24 - 6				
90520-02819	16 - 4	93210-29800	5 - 7	95022-06060	9 - 11		24 - 9				
	16 - 7	93210-29803	29 - 7	95022-06070	9 - 12		27 - 2				